

Ruderman, Ilagan, Fogel Battle for East Ka‘ū Senate Seat

Incumbent Russell Ruderman and County Council member Greggor Ilagan, both Democrats, and Libertarian Fred Fogel ask Ka‘ū citizens to vote on Saturday, Aug. 13 to secure the state Senate seat for Puna and east Ka‘ū, the boundary at Honu‘apo. All three candidates expressed their views in a forum sponsored by the Arts and Sciences Center. See <http://www.bigislandvideonews.com/2016/06/21/video-a-feisty-puna-state-senate-forum/>.

Ruderman has held the Senate seat since January 2011, when Gov. Neil Aber-

crombie appointed him after moving Sen. Russell Kokubun to chair the state Department of Agriculture. Ruderman was then elected to the Senate in 2012.

Ruderman, who lives in Puna, serves on four Senate committees: Commerce, Consumer Protection & Health; Economic Development, Environment & Technology; Human Services; and Water, Land & Agriculture. In Ka‘ū, he has worked to preserve water for local ranchers, sought funding to fight coffee and macadamia pests in Ka‘ū orchards, and truth in labeling for

Ka‘ū Coffee. Ruderman lobbied for more funding and focus on preventing dengue fever spread by mosquitoes. He became the Hawai‘i Region of SBA’s Small Business Person of the Year in a ceremony at the White House, and has created 200 jobs with his chain of food stores.

See russellruderman.com.

Ilagan serves on the County Council and currently heads the Planning Committee. The Puna resident was elected to the seat in 2012. He lists his priorities as a candidate for state Senate as Health, Education,

Environment, Employment, Affordable Housing, Resiliency and Transportation, or HE3ART. He emphasized that the community’s views are vital to how he determines his stands on issues. He has held several talk story meetings and backyard get-togethers in Ka‘ū and has been busy with his volunteers going door to door.

According to Ilagan, accomplishments as a council member include funding the first ‘Imiloa field trips for students and teachers from seven Puna schools, work-

Ka‘ū Senate Seat, pg. 4

THE KA‘Ū CALENDAR

Volume 14, Number 8

The Good News of Ka‘ū, Hawai‘i

August, 2016

What Will 2016 Mayoral Candidates Do for Ka‘ū?

Mayoral candidates hope to replace Billy Kenoī, who has reached his term limit for the county’s highest seat. The primary election takes place on Saturday, Aug. 13 from 7 a.m. to 6 p.m. Local polling places are Cooper Center in Volcano, Ka‘ū High School Cafeteria in Pāhala, Nā‘ālehu Elementary School, Ocean View Community Center and Miloli‘i Halau. Early walk-in voting is available weekdays from 9 a.m. to 12 p.m. and 1 p.m. to 3 p.m. through Thursday, Aug. 11. For election information, call 961-8277.

Marlene Hapai

Marlene Hapai has a long resume of public service, including former University of Hawai‘i regent, president of Hawai‘i Island Retired Teachers Association and senior vice president of Hawai‘i Island Portuguese Chamber of Commerce. Her campaign slogan is One Island One Community. “We have a major county budget deficit and new needs to address,” her campaign literature states. “To use resources more effectively, we can work together as one Hawai‘i Island Community, create public/private nonprofit partnerships to provide new resources to address community needs and use existing Community Development Plans that identify community needs to invite desired businesses into our communities to satisfy those needs and improve our economy, providing more services and jobs close to home. See [facebook.com/Marlenehapaimayor](https://www.facebook.com/Marlenehapaimayor).

Pete Hoffmann

Pete Hoffmann, a former chair of Hawai‘i County Council, said his overarching

Mayoral Candidates, pg. 2



Viewers gather around lava as it flows toward the emergency access road near Kalapana. It crossed the road and then reached the ocean at 1:12 a.m. on Tuesday, July 26. Photo from USGS/Hawaiian Volcano Observatory.

Hawai‘i Volcanoes & NPS to Celebrate 100th Anniversary

Aug. 1 marks the 100th anniversary of the establishment of Hawai‘i Volcanoes National Park, and Aug. 25 marks the 100th anniversary of the National Park Service. The park invites everyone to *Celebrate and Find Your Park* all month long with five fee-free dates, the annual Cultural Festival and BioBlitz, plus more centennial events.

Hawai‘i Volcanoes will celebrate the 100th anniversary of the National Park Service through music, culture and science on Friday and Saturday, Aug. 26 and 27, with free admission.

A Nā Leo Manu, a Heavenly Voices Hawaiian concert series, kicks off on Friday, Aug. 26 from 6 p.m. to 9 p.m. at Kīlauea Military Camp’s Kīlauea Theater. At 6 p.m., Kumu Hula Manaiakalani Kalua and Hālau Hula o Akaunu perform

‘oli (chant) and hula that follow Pele’s migration from Kahiki to Hawai‘i.

Kalua, who teaches for the Center for Hawai‘i Life Styles at Hawai‘i Community College, will also discuss how Hawaiian culture and science intersect. Renowned musician Kenneth Makuakāne follows, performing his mele (songs) until 8 p.m. Singer and songwriter Mark Yamanaka caps off the evening with his original and classic Hawaiian songs until 9 p.m. In addition, the new *Mele Ho‘oheno – Songs of Kīlauea* and *Mauna Loa* CD will be released and available for sale. Participants of the Haku Mele Hawaiian songwriting workshops this summer created this collection of original Hawaiian songs under guidance of Kaliko Trapp-Beamer and Makuakāne.

Saturday, Aug. 27 is the free Hawai‘i Volcanoes National Park Cultural Festival

& BioBlitz. This year’s festival connects visitors and the community to the culture, biology and geology of Hawai‘i Volcanoes National Park, a UNESCO World Heritage Site and International Biosphere Reserve.

“We are so excited to celebrate the centennial anniversaries of the National Park Service and Hawai‘i Volcanoes National Park the Hawaiian way, with music, culture and community,” said Park Superintendent Cindy Orlando. “Hawaiians have lived as stewards of this treasured landscape for centuries, and we hope everyone can join us for a festive weekend of fun, learning and camaraderie.”

Themed *E Ho‘omau* (to perpetuate; to continue in a way that causes good to be long-lasting), the 36th annual cultural

100th Anniversary, pg. 14

PRSR STD
US POSTAGE
PAID
PAHALA, HI
PERMIT NO.1

****ECRWSS
Postal Boxholder

Also in this issue: P2 Business * P3 Pāhala * P5 Sports * P6 Sports Calendar * P8 Event Calendar * P10 Nā‘ālehu * P11 Kahuku to Miloli‘i * P12 Star Map * P13 Health * P14 Volcano * P15 Energy & Sustainability

KA'U BUSINESS & REAL ESTATE

Volume 14, Number 8

The Good News of Ka'ū, Hawai'i

August 2016

Tabios Takes First in HCA's Cupping Contest Prize for Ka'ū Coffees

Ka'ū Coffees shined at Hawai'i Coffee Association's eighth annual Cupping Competition held in Kona in July. Ka'ū District's top coffees were Willie Tabios' The Rising Sun washed, wet and fermented Bourbon, Red Caturra and Guatemalan varietals at 84.2 points; Ed Olson's Ka'ū Coffee Mill natural Typica and Caturra peaberry at 83.3 points; and Manuel Marques' Hokulele Coffee Co. wet, sundried Brazilian Typica and

Caturra at 83.2 points.

In the Commercial Division, Ed Olson's Ka'ū Coffee Mill brand also tied for third place at 83.3 points. Leo Norberte's JN Coffee Farm brand scored 82.4 points to tie for seventh with wet, demucilaged Typica varietal.

In the Creative Division, 12 Ka'ū Coffees received scores higher than 80 points. The Rising Sun placed fifth with 84.2 points.

Hokulele tied for 12th with 83.2 points.

Typica tied for 44th at 81.3 points. Amelia Efren Abellera's Hokulua Farm wet, demucilaged Typica and Bourbon varietals scored 82.9 points to tie for 15th place. Robert and April Jung's Big Ka'ū Farms wet, fermented Typica tied for 18th with 82.7 points. Alex and Alan Calumpit's AC Farm wet, fermented mix tied and JN Coffee Farm tied for 33rd place with 81.9 points each. Lorie Obra, with Rusty's Hawaiian wet, fermented Typica earned 81.7 points for a tie for 39th place. Thadeus Lilly's FL Farm wet, demucilaged mix of Caturra and



Of 16 Ka'ū entries, Willie Tabios' The Rising Sun placed first. Photo by Julia Neal

Biason's Aroma Coffee Farm wet, fermented Guatemalan earned 46th place with 81.2 points. Lorie Obra's Rusty's Hawaiian wet, fermented Bourbon tied for 47th at 80.9 points. Gloria Camba's R&G Farm wet, fermented Typica scored 80.6 points to place 51st, and Leo Norberte's JN Farm pulped, natural yellow Typica and Bourbon tied for 53rd with 80.3 points.

There were no entries scoring 80 or more points from Hāmākua, Moloka'i or O'ahu.

Manfredi, Gaston, Stevens Elected by HCA

Hawai'i Coffee Association also elected new officers. They are President Chris Manfredi, of Discovery Harbour, a coffee broker and an organizer of Ka'ū Coffee Festival and Vice President Ralph Gaston, of Pāhala and Isla Custom Coffees. Secretary is Gloria Biven, of Kona Coffee Visitor Center and Museum. Treasurer is Adrian Guillen, of Hawaiian Queen Coffee. Also on the board from Ka'ū is Randy Stevens, manager of Ka'ū Coffee Mill.

THE KA'U CALENDAR

The Good News of Ka'ū
August 2016, Vol. 14, No. 8

Published by:

The Ka'ū Calendar, LLC.
P.O. Box 940, Pāhala, HI 96777
Phone: (808) 928-6471
www.kaucalendar.com

Publisher & Editor: Julia Neal
(mahalo@aloha.net)

Story Editor & Calendar: Ron Johnson
(ron@kaucalendar.com)

Associate Editor: Nālani Parlin

Design/Production: Tanya Ibarra

Contributors: Elijah Navarro, Lew Cook, Geneveve Fyvie, Ann Bosted

Assembling: Ka'ū Community Volunteers

For advertising call:

Ron Johnson at 928-6471 or ron@kaucalendar.com
Nālani Parlin at 217-6893 or kaucalendar@gmail.com
Lee Neal at fonseca33@aol.com
Geneveve Fyvie at geneveve.fyvie@gmail.com or
Elijah Navarro at 928-6471 or e38navarro@gmail.com

Printed by Hawai'i Hochi

www.kaunewsbriefs.blogspot.com

follow us on
twitter

JOIN US ON
facebook

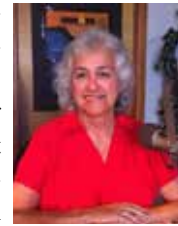
Mayoral Candidates, cont. from pg. 1

ing issue is poverty, citing a statistic that up to 25 percent of the Big Island population lives at or below federal poverty standards.

Hoffmann said he has no silver bullet to solve poverty problems but contends that agriculture and affordable housing could help. "If we can feed ourselves less expensively and provide reasonable, affordable housing, at least that will take care of two human necessities," he said.

On agriculture, he addresses more than

a half dozen proposed initiatives at friendsof-petehoffmann.com.



Marlene Hapai

"We need an overall agricultural coordinator for the county and a staff of four or five trained people with education and technical skills in farming," he said. We must significantly increase the amount of grants that are sitting out there with rural development," he said. "We really don't have anyone doing grant writing for ag programs.

The former University of Hawai'i regent

Mayoral Candidates, pg. 3



EXPERIENCE & ALOHA

✓ RE-ELECT MAILE MEDEIROS DAVID COUNCIL DISTRICT 6

Aloha Kakou! Mahalo a nui loa for the privilege of serving as your Councilmember. Some of the issues facing District 6 have been ongoing, and others newly created. Addressing these issues were at times challenging, but very rewarding when solutions were realized. These accomplishments would not have been possible without the support and trust of the people and the working relationships I was privileged to nurture with county departments, state agencies, our mayor and his staff. I look forward to continuing my work and humbly ask for your support.

MY COMMITMENT TO YOU:

- I will continue to be your voice on the County Council
- I will maintain my "open door" policy and listen to your needs
- I will continue to support and fund projects that benefit District 6

FIRST TERM ACCOMPLISHMENTS:

- Reso 256-15 - Proposed Amendment to Implement Ahupua'a Concepts in Gen. Plan
- Reso 287-15 - Acquire Kahua Olohu Makahiki Gaming Field - Public Open Space
- Reso 520-16 - Ocean View 2nd Well: Authorizing Mayor to enter into agreement with State - \$725,000 funding encumbered
- Ord. 16-73 - CIP Budget Amendment Kahuku Park Improvements - \$750,000
- Bill 201 - Kahuku Park - Require permit to consume alcohol
- New Honaunau Rodeo Arena and Community Center
- St. John's Church Road - Guardrail Installation
- Manini Beach Subdivision - No Parking Signs
- Secure Site for Civil Defense Siren at Ho'okena Beach
- Na'alehu Playground - Complete Construction
- New Pāhala Playground - Complete Upgrade
- Ocean View Transfer Station - Coordinate New Site
- Volcano Transfer Station - Complete Construction
- Ocean View Spillouts - Remain Open During Well Repair

www.mailedavid.com

PAID FOR BY THE COMMITTEE TO ELECT MAILE DAVID • 86-4310 MAMALAHOA HWY, CAPTAIN COOK, HI 9670

KA PEPA PĀHALA

Volume 14, Number 8

The Good News of Ka'ū, Hawai'i

August 2016

Bon Dance Aug. 21, First in Pāhala Since 1999

Everyone is invited to participate and practice for Pāhala Hongwanji's first Bon Dance of the 21st century, set for Sunday, Aug. 21. Sunday practices began on July 24 and continue on Aug. 7 and 14 from 12 p.m. to 2 p.m. at Pāhala Community Center. Participants are asked to bring a tenugui (hand towel) and uchiwa (fan).

The hongwanji held its last Bon Dance in 1999. Footage of that service, filmed by Cliff Watson, is available at uluulu.hawaii.edu/titles/3789. Watson, a filmmaker based

in Honolulu with family ties to Pāhala, also made a film on the last harvest of Ka'ū Sugar Co. in 1996, called *Ka'ū Sugar: A Town Remembers*. See uluulu.hawaii.edu/titles/4451. Watson said he plans to visit Pāhala to witness the historic return of the Bon Dance this month.

Bon Dances not only draw Buddhists. People of all religions and ethnic groups are invited. It is a style of dancing performed during the Obon season to welcome spirits of ancestors during the harvest, when food

is placed at the temple altar.

Obon dances, which are held around the island each summer, involve people, often in traditional Japanese dress, moving in a circle around a high wooden scaffold called a yagura. The yagura is usually also the bandstand for musicians and singers of Obon music.

The event begins with a service, followed by the dance and fellowship, including food.



Everyone is invited to attend Sunday Bon Dance practices to prepare for Aug. 21, Pāhala Hongwanji's first Bon Dance since 1999, when filmmaker Cliff Watson took this photo. Watson also made a film about at Ka'ū Sugar Co.'s last harvest. *Photo by Cliff Watson*

Mayoral Candidates, cont. from pg. 2

said he wants to work with the community college to develop educational program not just for jobs but for careers. "I don't want to create jobs; I want to create career paths, for graduating high school seniors who might have an interest in agriculture and those already in farming, perhaps part-time or who have an opportunity but afraid to take the risk,"

he said. He wants the college to help them overcome the resistance of taking the plunge by possibly help pay for this education. "A lot of private land in Ka'ū could be placed in agriculture," Hoffmann said. He



Pete Hoffmann

suggested a five-year county tax holiday on new land placed into production and other incentives. He also wants to have the county oversee and implement much more aggressive policies for community and individual gardens. "I believe this county can feed itself in the short term," he said. "In the long term, I believe we could become the breadbasket of the state – way down the line – but the potential revenue could be immense for this island," he said, pointing out that despite all the emphasis placed on tourism, "we are at heart a rural community.

"We are missing out on a number of opportunities this island has. We are missing out on political will."

Hoffmann said he is happy that Gov. David Ige saw fit to advocate for a new program that will grow farmers while they are still in high school. The initiative is designed to provide courses in ag, he said.

Harry Kim

Mayor Harry Kim, the

former mayor and longtime Civil Defense director addresses the question of "Why are you running?" at harrykimformayor.com.

"When I first considered placing my name on the ballot, it was in part due to people asking me to just give them an additional choice in the election. A choice on a difference in management style, priorities and just as important, how things are done.

However, as time went on, some home rule issues became more the focus and concerns of many. An issue was the status of the community development plan program and the lack of support felt by especially those who contributed so much of their time on this issue.

"Other home rule issues are raised by Act 55 (established the Public Land Development Corporation), Act 97 (eliminated geothermal resource permit authority of the Hawai'i County Planning Commission, eliminated geothermal subzones and makes geothermal activity permissible in any land use category) and the attempt by county and state officials to exempt geothermal exploratory drilling from any EA or EIS require-



Harry Kim

ments. It is emphasized that I do support geothermal development, but it must be done right to ensure the protection of people and the environment.

"It became very clear that the issues were not just how geothermal or other projects were developed, but more importantly, the taking away of the people's opportunity for input, the role of the local county government, and the determination of the kinds of developments that affected their lifestyle and their home. These issues are at the very heart of what we believed to be the role and relationship of the people and their government.

These were important enough to me to put my name on the ballot."

Wally Lau

Wally Lau, as Hawai'i County deputy managing director and managing director, helped manage daily operations of the Hawai'i County administration for the past seven years. He said at wallylau.com that his "next step forward in a career of caring for people and strengthening our island community is to become mayor and leader of our

Mayoral Candidates, pg. 4

AIKANE PLANTATION COFFEE COMPANY

Ka'ū Coffee & Gifts

www.aikaneplantation.com

808-927-2252

ALI'I HAWAIIAN HULA HANDS COFFEE

928-0606 • www.aliihhhcoffee.com

GUIDE TO KA'Ū CHURCHES

VOLCANO	
• New Hope Christian Fellowship	967-7129
• Volcano Assembly of God	967-8191
PĀHALA	
• River of Life Assembly of God	928-0608
• Holy Rosary	928-8208
• Pāhala Bible Baptist Mission	928-8240
• Pāhala Hongwanji	928-8254
• Wood Valley Tibetan Buddhist Temple & Retreat	928-8539
NĀ'ĀLEHU	
• Assembly of God	929-7278
• Iglesia Ni Cristo	929-9173
• Jehovah's Witnesses	929-7602
• Kaūha'ao Church	929-9997
• Latter Day Saints	929-7123
• Light House Baptist	939-8536
• Nā'ālehu Hongwanji Buddhist Temple -	95-5693 Mamalahoa Hwy., Nā'ālehu, HI 96772
• Sacred Heart	
• United Methodist	
• Christian Church Thy Word Ministry	
Nā'ālehu Hongwanji, Sundays 10 a.m.	
OCEAN VIEW	
• Kahuku UCC	929-8630
• Ocean View Baptist Church	430-8268
Worship Service: Sunday, 1 p.m. Ocean View Community Center. All are welcome!	
• OV Evangelical Community Church	939-9089
• St. Jude's Episcopal	939-7000
• Divine Faith Ministries 929-8570 (non-denominational) meets	
Ocean View Community Center 10 am Sundays, Children, Youth, Bible Study. Call for more information .	
• Church of Christ	928-0027
Back to the Bible! 9 am, Bible class studying Romans. Worship 10A.M. Expository lessons from N.T. Books	

AS THE PRIMARY ELECTION CAMPAIGN CLOSES, VOTERS HAVE A DEFINITE CHOICE FOR MAYOR.

ON 13 AUG. CHOOSE AN INDIVIDUAL WHO

- HAS THE LEADERSHIP SKILLS FOR THE JOB.

- ADVOCATES FOR OPEN GOVERNMENT.

- LISTENS TO BOTH SIDES OF AN ISSUE.

- EMPLOYS UNQUESTIONED INTEGRITY.

- IS NOT PART OF THE "GOOD-OLE BOYS."

PETE HOFFMANN

THIS ELECTION IS NOT A "POPULARITY" CONTEST.

VOTE FOR THE CANDIDATE WHO IS BEST QUALIFIED

PETE HOFFMANN

Paid for by Friends of Pete Hoffmann POB 385767, Waikoloa, HI 96738

Pianist Joins Soprano, Violinist & Cellist Aug. 13

Donations can be made for Hawai'i International Music Festival's engagement in Pāhala. After opening its inaugural season at the Neal S. Blaisdell Center Concert Hall in Honolulu, the special concert at Pāhala Plantation House on Saturday, Aug. 13 at 6 p.m. honors the 20th anniversary of Ka'ū Coffee. The concert will help raise awareness for donations for Hawai'i Public Radio's efforts to bring a stronger and more reliable signal to this community and the entire state.



Ian Parker

The concert features Amy Shoremount-Obra (soprano and daughter-in-law of Lorie Obra, of Rusty's 100% Hawaiian Coffee), Eric Silberger (violin), Daniel Lelchuk (cello), and Mikayla Sager (soprano). Special guests include internationally acclaimed pianist Ian Parker, who has appeared as soloist with Hawai'i Symphony Orchestra. Carlin

Ma is artistic program director.

Tax deductible donations of \$25 each, may be made for tickets at musicfestival.bpt.me. To make a larger donation to HPR, contact Julia Neal at 928-9811 or mahalo@aloha.net.

The festival kicks off on Monday, Aug. 8 at Hawai'i Volcanoes National Park, where Silberger, who recently made international press for playing inside Icelandic Volcano Thrihnukagigur, plays violin at various locations around the park in celebration of the its and National Park Service's 100th anniversary. At 7 p.m., he presents a free concert at Volcano House, with Kīlauea Caldera and Halema'uma'u Crater as his backdrop. The concert will include the world premiere of a composition dedicated to the park's centennial. Park entrance fees apply.

Mayoral Candidates, cont. from pg. 3 Hawai'i Island.

On Jan. 28, he resigned from his post as managing director to pursue his campaign for mayor. "I did not want any perception of a conflict of interest, or that 100 percent of my energies are not being invested in my job," Lau said. "By resigning,



Wally Lau

I am able to focus on my campaign by meeting with people and sharing with them my values

Mayoral Candidates, pg. 6

Ka'ū Senate Seat, cont. from pg. 1

ing with Mayor Billy Kenoi to add five new police officers for Puna, working with Neighborhood Watch groups and police to prevent and report crime, and establishing a dedicated bus route through Hawaiian Paradise Park. He said that he is a good negotiator and has a special skill at understanding everyone's points of view in order to solve problems and bring people together. Ilagan said that he takes each issue and spends a lot of time studying the situation and searching for solutions.

Ka'ū Senate Seat, pg. 6



Raina for the 'Āina

Raina is committed to:

- Transparent and ethical government
- Sustainable agriculture and renewable energy
- Local & organic food production
- Implementing zero waste and recycling programs
- Environmental protection and sustainable development
- Social support for keiki and kupuna
- Improving educational opportunities and outcomes
- Respecting Hawaiian values and traditions
- Affordable family housing

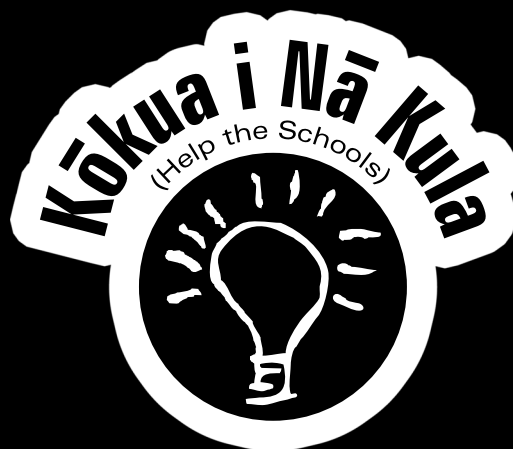
Please #voteRAINA in the Primary on August 13th



www.voteraina.com

Paid for by Friends of Raina Whiting, PO Box 377534, Ocean View, HI 96737

Help Share \$100,000 with Hawai'i Island Schools



SHOP

at KTA Super Stores and
Waikoloa Village Market
between August 10 -
September 20, 2016

BUY

participating products
(Each product equals 1 point)



DONATE

points to your
favorite school at
the checkout



Kraft

For more details, please visit www.ktasuperstores.com

Brought To You By These Participating Products



© 2016 Kraft Foods

The Ka'ū Calendar

KA'U SPORTS REPORT

Volume 14, Number 8

The Good News of Ka'ū, Hawai'i

August 2016

Southside Boys Charge to Championship Quarterfinals

Southside Volleyball Team placed fourth in the Gold bracket at the U.S. Volleyball Association's Boys Junior National Championships in Dallas, Texas last month. Southside team, made up of Ka'ū and other Hawai'i Island members, made it to the quarterfinals, where they lost to Maryland's MEVBC team in two close sets, 25-23 and 25-19. Last year, Southside finished ninth overall, taking the Silver bracket.

Local team members are Addie and Avery Enriques, of Punalu'u, both students at Kamehameha School in Kea'au; Kameron Moses, of Pāhala, another Kamehameha student; and Nai'a Makuakane, of Nā'ālehu, also a student at Kamehameha, where Guy Enriques coaches all of them. Many of the members have been playing volleyball together since the age of ten.

Coach Guy Enriques, from Punalu'u, and Ka'ū players topped teams from Southern California, Ohio and Puerto Rico on the first day of play. Southside defeated a team called Pali 17 Nike, from Southern California, with scores of 25-17 and 25-15. Southside took out Southport 17s, from Ohio, with scores of 25-19 and 25-12. Southside won a tougher battle to defeat the Ponce Pumas, from Puerto Rico, with scores of 25-



Southside volleyball team placed fourth in their bracket at USA Volleyball's 2016 Boys Junior National Championships in Dallas, Texas last month.

Photo by Katherine Okamura

20, 24-26 and 15-12.

The team celebrated Fourth of July by winning all three of their matches. Southside first went up against Southport, of Kenosha, Wisconsin and won in two sets, 25-14 and 25-22. Their next opponent was Maryland's MVP, which the boys also beat in straight sets, 25-17 and 25-15. AZ Fear tried to instill fear in Southside when the team from Phoenix, Arizona won the second set, but Southside came back in the third set, 25-20, 22-25 and 15-6.

On July 5, Southside had a rematch with Puerto Rico's Ponce Pumas and won 25-19 and 25-20. Vaqueros, also of Puerto

Rico, rode away with a victory in a close match, 28-26 and 27-25. Southside bounced back and hit the Cincinnati Attack, of Ohio, with scores of 25-21 and 25-19.

Team members found themselves in the midst of danger during the tragedy in Dallas on the day before returning home. During a peaceful protest regarding police shootings of men in Minneapolis, MN and Baton Rouge, LA, a sniper shot and killed five police officers and injured more. The team and chaperones were staying at a hotel on Commerce Street in downtown Dallas.

"Our boys are OK, but we are all kind of shaken with everything that is going on," Brenda Iokepa-Moses said. "We were all at a movie when the shootings happened. The theater was about a mile away from our hotel, and we could not get a ride back. I had to run our team through total chaos and police barricades back to the hotel while there were active snipers still on the loose. It was terrifying, and we had to maneuver through dark alleys to get back to our hotel but did it and very proud of our team that stuck together and kept their cool."

The Boys Junior National Championships is considered a prime event for college recruiters looking to provide scholarships for talented volleyball players. Ka'ū volleyball players have become recipients



Kameron Moses sets the volleyball.

Photo by Brenda Iokepa-Moses

of such opportunities, attending colleges and universities on the mainland, including Stanford.

A volleyball camp at Ka'ū High School Gym, with competitors flying in from Oregon, was held before the Southside team took off last week to Dallas. It was sponsored with local contributions of food and money and the donation of accommodations by Pāhala Plantation Cottages. The Olson Trust also donated accommodations at the Old Pāhala Clubhouse.



'16 NISSAN

NV200 CARGO VAN S

GREAT MPG - SUPER CARGO CAPACITY



#67116 691460, 692737

Special financing available thru Kama'aina Nissan. Call for details.

Buy It Now! \$24,490

\$245 *PRICES PLUS TAX, LIC, \$245 DOC FEE, AND DEALER INSTALLED ITEMS. FINANCING O.A.C. REBATES AND INCENTIVES APPLIED TO SALE PRICE. OFFERS NOT COMBINABLE. VEHICLES NOT EXACTLY AS PICTURES AND ARE SUBJECT TO PRIOR SALE. SEE DEALER FOR COMPLETE DETAILS. SALE ENDS 8/31/16.



www.kamaainanissan.com

930-6497

471 Kalaniana'ole St.

"Where We Make A Difference"



Register now for the third annual Ka'ū Coffee Trail Run in Wood Valley.

Photo from Taylor's Treasures Photography

Register for September Ka'ū Coffee Trail Run

The third Annual Ka'ū Coffee Trail Run celebrates award-winning Ka'ū Coffee. All proceeds from the event sponsored by 'O Ka'ū Kākou stay in Ka'ū to benefit the Ka'ū community. On Sept. 17, Ka'ū Coffee Trail Run offers moderate to highly challenging 5K, 10K and Half Marathon races through macadamia nut and coffee fields along Ka'ū's beautiful slopes. Races begin and end at Ka'ū Coffee Mill. The course starts with a family-friendly 5K, continues uphill through a moderately challenging 10K and reaches a 3,100-foot elevation in the vigorously exhilarating Half Marathon. Each runner receives a massage, lunch and a goodies bag, including a T-shirt.

Regular registration ends Aug. 15, and late registration ends Sept. 12. Race day registration ends at 6:30 a.m. Races begin at 7 a.m. The 5K is a family-friendly, run/walk trail through macadamia nut groves and coffee fields. The 10K is a moderate run through macadamia nut groves, coffee fields and a eucalyptus tree forest. The Half Marathon follows the 5K and 10K course, then continues up to an elevation of 3,100 feet, traverses onto a four-wheel-drive access road, marked trails undulating through grazing pastures, former sugarcane fields and winding down through newly planted coffee fields.

Awards go to top three men and women overall and in age groups from 19 and under to 70 and over. Fun for the whole family includes live entertainment, silent auction, local food, awards and door prizes (must be present to win).

For more information and to register, see race360.com/21357.

KA'Ū SCHOOL & YOUTH

'Ohana Enjoy New Ka'ū Playgrounds

Hawai'i County officials joined Ka'ū keiki, kupuna and other residents to celebrate two new playgrounds on June 29. Playgrounds at Nā'ālehu Park and Pāhala Community Center feature a variety of slides, climbing walls and ropes and twirling bars, along with park benches. Artificial turf covers the grounds' padded surfaces.

Henry K. Makuakane, Jr. offered opening blessings for both playgrounds. Also attending were Hawai'i County Mayor Billy Kenoi and Council members Maile David, Greggor Ilagan and Karen Eoff. Deputy County Parks Director James Komata, Pāhala Park manager Nona Makuakane and Nā'ālehu Park manager Richard Karasuda were also on hand.

Junior Miss Ka'ū Coffee Karlee Fukunaga-Camba, First Junior Miss Princess Caylasa Koi, Third Junior Miss Princess Helena Nihipali-Sesson and Second Miss Ka'ū Coffee Peaberry Khloe Moses joined the celebration, representing the Ka'ū Coffee industry.

Komata expressed appreciation to community members for their patience and thanked park staff, Kenoi and David for working together to bring these two playgrounds to completion. David credited Kenoi, Parks & Recreation Director Clayton Honma and Deputy Director James Komata for working diligently with her to prioritize and secure additional funding necessary in order to complete Nā'ālehu Playground, previously initiated by former Council mem-

Mayoral Candidates, cont. from pg. 4
and my vision."

"I listen and respond," Lau said. "I always seek for what is fair and pono. When presented with challenging decisions, I always ask, 'Will it be in the best interest of the public? Is it good for the community?'"

Lau said that principle will guide the county under his administration if elected, as he leads the island "with aloha and a spirit of cooperation and collaboration with the community."

Others seeking the office are Alvin Akina, facebook.

ber Brenda Ford. David was also especially appreciative to Kenoi and his administration not only for making the Nā'ālehu Playground a reality but also for recognizing and concurring with her priority to upgrade the antiquated Pāhala Playground and fund improvements to provide the keiki of Pāhala and the community with a state-of-the-art playground.

Kenoi spoke directly to the children anxiously awaiting each opening and told them, "This is your special place, your pu'u honua. A place where you can come with your parents, grandparents, uncles and aunts to enjoy and be safe; not to be a bully and put other kids down, but instead a place where you pick your friends up, enjoy each other and always with respect and aloha."

David said the day was such an uplifting experience, being able to see keiki enjoy new experiences the playgrounds offer. She said the county pushed to have the Nā'ālehu playground ready in time for the Fourth of July celebration there. "This is a special day for our children and families of Ka'ū," she said. "The joy and excitement on the faces of the children as they wait in anticipation for the maile lei to be untied and the playground finally opened is what makes my job so worthwhile and meaningful." David said she will continue to pursue projects such as this and hopes to realize funding of her Kahuku Park/Playground Capital Improvement Project for fiscal year 2016-2017.

com/alvin.akina; Paul Bryant; Daniel Cunningham; Wendell Ka'ehu'ae'a, facebook.com/wendell.kaehuaea; Helen Luta, facebook.com/public/Helen-Luta; Shannon McCandless, facebook.com/public/Shannon-McCandless; Gene Tamashiro, facebook.com/public/Gene-Tamashiro; Timothy Waugh, facebook.com/timothy.waugh.1; and Eric Weinert facebook.com/eric.weinert.3.

Ka'ū Senate Seat, cont. from pg. 4

See voteilagan.com.

Fred Fogel has run for public office in the past, including an attempt to gain a seat in the state House of Representatives in 2012 and 2014. A Volcano resident, Fogel said his primary goal is to improve the way government operates and effectively supports citizens. Regarding taxes, his reforms include eliminating tax on earnings up to poverty level and implementing a revenue-neutral, flat tax thereafter; eliminating tax on tips, barter and inheritance; eliminating sales tax on food and medicine; and taxing agricultural enterprises at the lowest rate.

Fogel said his vision for government is to give individual counties more autonomy, follow Community Development Plans, balance the budget and reduce government cost. He also said he supports letting "the people of Hawaiian ancestry determine their own destiny and support their choice as a 'nation.'"

Relating to environment, Fogel opposes al-
Ka'ū Senate Seat, pg. 16
The Ka'ū Calendar



Keiki enjoy Pāhala Community Center's new playground after its blessing in June.
Photo by Ron Johnson



Eager keiki wait for the maile lei to be cut so they can experience Nā'ālehu's new playground.
Photo by Lee McIntosh

TAYLOR-BUILT



CONSTRUCTION CO., INC.
BC-18812

General Contractor
Certified Home Inspector
Residential and Commercial

Quality construction at affordable prices

*New construction, remodels,
re-roofing, concrete work*

Call Bob @ (808) 929-8112

Email: tbcci@hawaii.rr.com

Compost and Soil Mix Available

"Serving the Big Island for over 27 years"

Proud to support our Ka'u Trojans

PUNALU'U BAKESHOP

Supporting the Youth of Ka'ū



Home of the Famous Sweetbread

Open Daily 9am to 5pm

Gifts * Lunches * Snacks

Phone: 929-7343

www.punaluubakeshop.com

Pahala Plantation Cottages

Check out our Kamaaina Rates!

928-9811

**SUPPORT LOCAL
BUSINESSES!!**

**Tell them you saw their ad in
The Ka'ū Calendar!**

ROYAL HAWAIIAN ORCHARDS, LP

"A Proud Sponsor!"

P.O. Box 130

Pahala, HI

928-8383

GO TROJANS!

EVENTS & ACTIVITIES



A bullfighter, formerly known as rodeo clown, runs to the scene as paniolo approach the steer. Photo by Cindy Orlando

Biggest Crowd in Years as Paniolo Launch Rodeo Grounds Expansion

A rodeo grounds fundraiser, to bring in some \$85,000 to expand the Nā'ālehu facility of Ka'ū Roping & Riding Association, kicked off over Independence Day weekend. The biggest crowd and most competitors in years converged on Nā'ālehu Rodeo Grounds for the Saturday and Sunday rodeo and paniolo fellowship. Some rodeo horses sailed in by barge from other islands, while local cowboys and cowgirls trucked their steeds from all around the Big Island.

Ka'ū Roping & Riding Association, a 501C3 non-profit, is looking to purchase about two acres adjacent to the rodeo grounds to handle the growing number of people coming to its events and to expand its activities. President of the organization is Ralph Ka'apana.



Ka'ū Roping & Riding Association officers Ralph and Tammy Ka'apana, along with Rodeo Queen Kalia Andrade and top Bull Rider Westin Joseph. The organization is looking for donations to purchase more land for its rodeo grounds in Nā'ālehu.

Vice-President is Barney Mallicki. Secretary is Jennifer Shibuya. Treasurer is Tammy Ka'apana.

To make a donation, call 929-8079, or send a check and information required for tax deduction to Ka'ū Roping & Riding Association, PO Box 423, Nā'ālehu, HI 96772.

Gold Buckle winners at the rodeo, all of them receiving prize money from Ka'ū Roping & Riding Association, are, in keiki competitions: Dummy Roping ages four and under, Ryder Tavares, buckle sponsored by Sherlene Rosario of Pāhala Pops; Dummy Roping ages five to eight, Mauka Balucan, buckle sponsored by Patti Barry, of The Land Office; Goat Undecorating ages four and under, Manaia Balucan, buckle sponsored by Wayne Kawachi, of 'O Ka'ū Kākou; Goat Undercorating - ages five to eight, Tayden Freitas, buckle sponsored by Carl and Amy Okuyama, of Nā'ālehu 76 and Wiki Wiki Mart.

In adult competitions: Po'o Wai U, Evan Manoha, buckle sponsored by Justie Mona Wroblewski; Tie Down Roping, Kahiau Onaka, buckle sponsored by Wally and M.J. Andrade with M.J. Ranch; Wahine Breakaway, Pua Kauhaihao, buckle sponsored by Robert Kawamoto and Umi Ranch; Calf Riding, Tervin Terlep, buckle sponsored by Ka'ū Auto Repair; Bull Riding, Westin Joseph, buckle sponsored by Tammy and Ralph Ka'apana, of Four K Ranch; Wahine Mugging, Cacy Borges and Shannon Benevides, buckles sponsored by Waimea Hill Country & Tack, Inc. and Kenneth and Jonette Gaston, of Slack Enterprises; Kane-Wahine Ribbon Mugging, Katie Andrade and Bronson Branco, buckles sponsored by West Hawai'i Towing; Youth Barrels, Abby Forster, buckle sponsored by Hana Hou Restaurant; Double Mugging, Kepa Benevides and Ryan Sanborn, buckles sponsored by Edwin DeLuz Trucking; Team 90s, Wally Ching and Travis Gomes, buckles sponsored by Ka'ū Andrade Contracting and Steven and Phina Wroblewski; Kane-Wahine Dally, Bronson Branco and Makayla Awa, buckles sponsored by Robert Kawamoto and Umi Ranch; and Open Dally, Nolan Nobriga and Shawn Aguiar, buckles sponsored by Miranda Country Store.



Veteran rodeo announcer Al Cabral. Photo by Julia Neal



Calf Riding in Nā'ālehu.

Photo by Cindy Orlando

Ka'u Andrade Contracting, Inc.

Land Clearing & Excavation

License No. C-15571 * C-11607

PUC 5133-C

CALL WALLY



P.O. Box 74
Nā'ālehu

Bus: (808) 929-7106

Bus: (808) 929-7322

KA'Ū AUTO REPAIR



YOUR ONE-STOP SHOP!!

U-HAUL

Available Here

INTERSTATE BATTERIES

Ka'alaiki Rd. in Nā'ālehu



TOW TRUCK SERVICE

SAFETY INSPECTION

Station #500

929-9096. MOBILE 936-2272



PAHALA PLANTATION COTTAGES

VACATION RENTALS - NIGHTLY, WEEKLY OR MONTHLY
1,2,3,4,7-BEDROOMS



Authentic Historic Homes
from the Early 1900s
1, 2, 3, 4 & 7 bedrooms
cottages & house

As seen in National Geographic Traveler & Kailua Magazines.
Minutes from Pāhala's Black Sand Beach & Volcanoes National Park.
Destress, Conferences, Dinners, Workshops, Weddings Welcome.



928-9811 mahalo@aloha.net

www.pahalaplantationcottages.com

COMMUNITY CALENDAR

Early Walk-In Voting, Mon – Fri, Aug. 1 – 11, 9 a.m. 12 p.m. & 1 – 3 p.m., Pāhala Community Center. Election info, 961-8277

Students' First Day of School, Mon, Aug 1, Kaʻū public schools.

Happy 100th Birthday, Mon, Aug 1, Kīlauea Visitor Center in Hawaiʻi Volcanoes National Park. Entrance fees waived as a gift to visitors. Cookies and music 9 a.m.; cultural demos & turtle program 11 a.m. – 1 p.m.

Endemic Understanding, daily through Sun, Aug. 28, 9 a.m. – 5 p.m., Volcano Art Center Gallery in Hawaiʻi Volcanoes National Park. Artists celebrate biodiversity of Hawaiʻi Island's national parks. volcanoartcenter.org

Taking Root in the Community, Mon, Aug 1, 9 a.m., Kīlauea Visitor Center in Hawaiʻi Volcanoes National Park. Friends of Hawaiʻi Volcanoes National Park give away 100 native seedlings each of koa and mamaki trees to local residents.

Back-to-School Kick-Off, Mon, Aug 1, 3 p.m., Kaʻū High & Pāhala Elementary School. Informational Fair 3 – 5 p.m.; light dinner & welcome, 5:15 p.m.; visit classrooms & meet teacher, 6 – 6:30 p.m. 313-4100

Volunteer Fire Department Meeting, Mon, Aug 1, 4 p.m., Ocean View Community Center. 939-7033

Meet Marlene Hapai, Mon, Aug 1, 6 p.m., Ocean View Community Center. Hapai is a candidate for Hawaiʻi County mayor. 939-7033

Hawaiʻi County Council Meetings, Tue/Wed, Aug 2/3 & 16/17. Kaʻū residents can participate via videoconferencing at Nāʻālehu State Office Building. See hawaiicounty.gov for agendas & live-streamed & archived meetings.

Kaʻū Coffee Growers Meeting, Tue, Aug 2, 6 – 8 p.m., Pāhala Community Center.

Artist-in-Residence Open Studio, Mon – Fri beginning Wed, Aug 3, 10 a.m. – 3 p.m., ʻŌhiʻa Wing between Kīlauea Visitor Center and Volcano House. Rick Makanaaloha Kiaʻimeaokekanaka San Nicolas returns for his third year and invites visitors to join him in his open studio all month long. Free; park entrance fees apply.

Ocean View Neighborhood Watch meeting, Thu, Aug 4, 7 p.m., Ocean View Community Center. 939-2442 & 928-2015

Stewardship at the Summit, Fri, Aug 5 & 19; Sat, Aug 13; 9 a.m. – 12 p.m., Kīlauea Visitor Center in Hawaiʻi Volcanoes National Park. Volunteers clear ginger from park trail. Free; park entrance fees apply. nps.gov/havo

Find Your Park on the Big Screen, Fri, Aug 5, 7 p.m., Kīlauea Visitor Center Auditorium in Hawaiʻi Volcanoes

National Park. Discover Haleakalā National Park in the 51-minute film, *Haleakalā: House of the Sun*. Rangers share their knowledge and respect for the park, its natural treasures and the deep connection to Hawaiian culture perpetuated there. Free; park entrance fees apply.

Realms & Divisions of Kahuku, Sat, Aug 6, 9:30 – 11:30 a.m., Kahuku Unit of Hawaiʻi Volcanoes National Park. Puʻu Kahuku Trail explores realms and divisions of the traditional Hawaiian classification system at Kahuku. Free. nps.gov/havo

Party on the Crater's Edge, Sat, Aug 6, 6:30 – 9 p.m., Volcano House patio. Friends of Hawaiʻi Volcanoes National Park's fundraiser includes light pupus, entertainment and silent auction. \$50. fhvnp.org

Birth of Kahuku, Sun, Aug 7, 9:30 – 11 a.m., Kahuku Unit of Hawaiʻi Volcanoes National Park. Participants explore the area's rich geologic history. Free. nps.gov/havo

Ham Radio Operators Potluck Picnic, Sun, Aug 7, Manukā Park. All American Radio Emergency Service members, anyone interested in learning how to operate a ham radio and families are invited to attend. Dennis Smith, 989-3028

Beginning Hawaiian Language Classes, Sun, Aug 7 & 21, 2 p.m., Kaʻū Youth Center near Nāʻālehu Community Center. Classes taught by kupuna Jeannette Howard are followed by informal kanikapila stressing songs of Kaʻū. Free; open to all. Beverly Byouk, 936-7262

After School Clay, six sessions beginning Tue, Aug 9 for 9-12-year-olds; Wed, Aug 10 for 6-9-year-olds; 2:30 – 4 p.m., Volcano Art Center in Volcano Village. Lisa Louise Adams offers these series. \$55/\$50 VAC members plus \$15 supply fee. 967-8222

Hand Building with Clay, six sessions beginning Tue, Aug 9, 6:30 p.m.; Thu, Aug 11, 2:30 p.m., Volcano Art Center in Volcano Village. \$125/\$115 VAC members plus \$25 supply fee.

Vog Study Results, Tue, Aug 9, 5:30 – 6:30 p.m., Pāhala Library. Claire Horwell discusses her study to assess how Kaʻū residents protect themselves from vog. USGS Hawaiian Volcano Observatory provides information about Kīlauea's background and current status.

After Dark in the Park, Tue, Aug 9, 7 p.m., Kīlauea Visitor Center Auditorium in Hawaiʻi Volcanoes National Park. Rick Makanaaloha Kiaʻimeaokekanaka San Nicolas provides a public exhibit and lecture about his artwork, his inspiration from the sacred volcanoes, native birds and the history and culture of Hawaiʻi. \$2 donations support park programs;

park entrance fees apply.

Laʻau Lapaʻau, Wed, Aug 10, 10 a.m. to 12 p.m., Kīlauea Visitor Center in Hawaiʻi Volcanoes National Park. Momi Subiono introduces traditional medicinal uses. Free; park entrance fees apply.

Thursday Night at the Center, Aug 11, 6 p.m., Volcano Art Center in Volcano Village. John Dawson's presentation and exhibit opening, *National Park Illustrations 1978-2016*. 967-8222

Red Cross Volunteer meeting, Thu, Aug 11, 7 p.m., HOVE

Park. \$19.16 includes pot roast beef with potatoes, honey-glazed ham, panko-crusted ono and more; 967-8356. Open to authorized patrons & sponsored guests; 967-8371. Park entrance fees apply.

Hawaiʻi International Music Festival, Sat, Aug 13, 6 p.m., Pāhala Plantation Manager's House. Featuring soprano Amy Shoremount-Obra, violinist Eric Silberger, cellist Daniel Lelechuk and soprano Mikayla Sager. Special guests include pianist Ian Parker and Taiko artist Kenny Endo. \$25 tickets support Hawaiʻi Public Radio's effort to extend signals



On your mark, get set, keiki prepare to start the race during Volcano Rain Forest Runs.

Photo from Sharron Faff

Run Volcano Rain Forest on Aug. 20

The seventh annual Volcano Rain Forest Runs are on Saturday, Aug. 20. All races start and finish at Cooper Center on Wright Road in Volcano Village. The Half Marathon begins at 7 a.m. followed by the 10K at 7:45 a.m. and 5K at 8 a.m. Billy Barnett, from Volcano, and Katie O'Neil, from Honolulu, return to defend last year's Male and Female winners' titles of the Half Marathon.

Packet pick-up and late registration is Friday, Aug. 19 from 1 p.m. to 5 p.m. at Volcano Art Center in Volcano Village. Commemorative T-shirts are not guaranteed for late registrations.

10K and 5K participants can register race morning at Cooper Center from 5:30 a.m. to 6:30 a.m. There is no race day registration for the Half Marathon.

The famous towels with all participants' names on them will be available for sale. Registered by Aug. 7 to be included on the towel.

Keiki ages 1-7 can register for the free 100- or 200-yard dash on race morning until 9:30 a.m. The Keiki runs, sponsored by Kīlauea Lodge, begin at 10 a.m. All entrants receive a ribbon and other goodies

after running through the finish line. Everyone is a winner.

Volcano Rotary Club will serve a BBQ Grill Lunch on race day from 9 a.m. on for \$9. Music and entertainment plus face painting and balloon animals to delight all the children, with crafts and other booths, add to everyone's enjoyment.

Parking is limited within Volcano Village, so carpool and arrive early. Parking lots are on Old Volcano Road at Volcano Store and Thai Thai Restaurant, within walking distance of Cooper Center.

Check Notice to Motorists information on page 14 for road closures on race morning.

Everyone is urged to use caution throughout the village during race morning to insure the safety of all participants, volunteers and spectators. Race Director Sharron Faff sent big mahalo out to everyone involved in this seventh annual community event.

All participants are responsible for knowing their race route. To register online and more information, maps, FAQs and volunteering, see www.volcanorainforeruns.com or call 967-8240.

Road Maintenance Corp. office. For volunteers and those interested in becoming volunteers. Hannah Uribes, 929-9953

Kīlauea 1916, Fri – Sun, Aug 12 – 21, Fri/Sat, 7:30 p.m.; Sunday, 2:30 p.m., Kīlauea Military Camp Theater in Hawaiʻi Volcanoes National Park. Kīlauea Drama and Entertainment Network helps KMC celebrate 100 years. \$10. Open to authorized patrons & sponsored guests; 967-8371. Park entrance fees apply.

Primary Election, Sat, Aug 13, 7 a.m. – 6 p.m., Cooper Center, Kaʻū High School Cafeteria, Nāʻālehu Elementary School, Ocean View Community Center, Miloliʻi Halau. Election info, 961-8277

Pancake Breakfast, Sat, Aug 13, 8 – 11 a.m., Ocean View Community Center. 939-7033

Atlas Recycling at South Point U-Cart, Sat, Aug 13, 9 a.m. – 1 p.m.

Centennial Buffet, Sat, Aug 13 & 20, Kīlauea Military Camp's Crater Rim Café in Hawaiʻi Volcanoes National

throughout Kaʻū. <http://himusicfestival.bpt.me>

ʻŌhiʻa Lehua, Sun, Aug 14, 9:30 a.m., Kahuku Unit of Hawaiʻi Volcanoes National Park. Participants learn about the vital role of ʻōhiʻa lehua in native Hawaiian forests, its many forms and flower on this free, easy, one-mile walk. nps.gov/havo

Medicine for the Mind, Sun, Aug 14, 4 – 5:45 p.m., Volcano Art Center in Volcano Village. Buddhist healing meditation for beginners through advanced. Free. Patty, 985-7470

After Dark in the Park: Establishment of Hawaiʻi National Park, Tue, Aug 16, 7 p.m., Kīlauea Visitor Center Auditorium in Hawaiʻi Volcanoes National Park. Dr. Jadelyn Moniz-Nakamura shares the story of development of the park and presents a look at individuals of the late 19th and early 20th centuries who were key in creating it. Free; park entrance fees apply.

Statehood Craft, Wed, Aug 17, 3:30 – 5 p.m., Pāhala Community Center. Grades K-8 register Aug 8 – 11. 928-3102

KAU COFFEE MILL HAWAII

Buy Local for ALL your Gifts!

Relax in our outdoor sitting area and tour our mill & farm.

96-2694 Wood Valley Road, Pāhala, Hawaiʻi

OPEN DAILY 8:30 A.M. TO 4:30 P.M.

www.kaucoffeemill.com • 928-0550

KA'Ū AUGUST 2016

Family Reading Night, Thu, Aug 18, 5 p.m., Ocean View Community Center. 939-7033

Hawaiian Civic Club of Ka'ū, Thu, Aug 18, 5:30 p.m. 929-9731 or 936-7262

OVCA Board Meeting, Thu, Aug 18, 6 p.m., Ocean View Community Center. 939-7033

Volcano Rain Forest Run, Sat, Aug 20, Volcano Village. Half Marathon, 7 a.m.; 10K, 7:45 a.m.; 5K, 8 a.m.; Keiki Runs, 10 a.m. All events start and finish at Cooper Center on Wright Road. Food & entertainment. Late registration & packet pick-up, Fri, Aug 19, 1–6 p.m., Volcano Art Center in Volcano Village; race day, 5:30 – 6:30 a.m., Cooper Center. volcanorainforestruns.com

Recycling at Nā'ālehu School, Sat, Aug 20, 9 a.m. – 1 p.m., Nā'ālehu School Gym. Redeem your HI-5 sorted by type; receive 5 cents per container and additional 20 cents per pound on all aluminum. Atlas Recycling donates 20 cents per pound on all aluminum redeemed to the school. 939-2413, ext. 230

Centennial Hike: Walk into the Past, Sat, Aug 20, 10 a.m., Kīlauea Visitor Center in Hawai'i Volcanoes National Park. Take an easy walk with a ranger to Volcano House and learn about its role in shaping early park history. Free; park entrance fees apply.

Kahuku 'Ohana Day, Sat, Aug 20, 10 a.m. – 2 p.m., Kahuku Unit of Hawai'i Volcanoes National Park. Keiki 17 and younger help park rangers restore the native forest by collecting and sorting new seeds. Call 985-6019 to register by Aug 5. Free.

Hula Kahiko, Sat, Aug 20, 10:30 a.m., hula platform near Volcano Art Center Gallery in Hawai'i Volcanoes National Park. Nā Kumu hula Keikilani Curnan & Liana Aveiro with Hālau Waiau perform. Loke Kamanu and 'ohana present Nā Mea Hula at 11 a.m. Free; park entrance fees apply. 967-8222

People & Lands of Kahuku, Sun, Aug 21, 9:30 a.m. – 12:30 p.m., Hawai'i Volcanoes National Park's Kahuku Unit. This free, guided, 2.5-mile, moderately difficult hike over rugged terrain focuses on the area's human history. nps.gov/havo

Ka'ū High School Alumni & Friends Potluck Reunion, Sun, Aug 21, Pāhala Community Center.

Bon Dance, Sun, Aug 21, 5 – 9 p.m., Pāhala Hongwanji. Practice Sunday, Aug 7 & 14, 12–2 p.m., Pāhala Community Center. Bring tenugui (hand towel) and uchiwa (fan).

After Dark in the Park: Oasis in a Desert Sea, Tue, Aug 23, 7 p.m., Kīlauea Visitor Center Auditorium in Hawai'i Volcanoes National Park. Robin Baird, book author and research biologist with Cascadia Research Collective, presents a look into the lives of toothed whales and dolphins of Hawai'i. Free; park entrance fees apply.

HOVE Road Maintenance board of directors meeting, Tue, Aug 23, 10 a.m., St. Jude's Church. 929-9910

Paper Plate Flower, Wed, Aug 24, 3:30 – 5 p.m., Pāhala Community Center. Grades K-8 register Aug 15 – 18. 928-3102

Fee-Free Dates for Founders Day, Thu – Sun, Aug 25 – 28, Hawai'i Volcanoes National Park and all national parks. National Park Service turns 100 on Thu, Aug 25 and gives the public four days to celebrate for free. www.findyourpark.com

Hawaiian Concert Series, Fri, Aug 26, 6 – 9 p.m., Kīlauea Military Camp's Kīlauea Theater in Hawai'i Volcanoes National Park. Hawaiian music, hula and 'oli open the fee-free NPS Centennial weekend, celebrate Kīlauea Military Camp's 100th anniversary and kick off the park's 36th annual Hawaiian Cultural Festival & BioBlitz. Free.

Ocean View Community Development Corp. meeting, Fri, Aug 26, 5 p.m., Hawaiian Ranchos office.

36th Annual Hawaiian Cultural Festival & BioBlitz, Sat, Aug 27, Hawai'i Volcanoes National Park. BioBlitz field inventories 7 a.m. – 1 p.m.; Cultural Festival 10 a.m. – 3 p.m. Authentic Hawaiian cultural practices and fun, hands-on opportunities to discover the park's biodiversity. Register for Bioblitz at fhvnp.org. Free.

Return of 'Alalā: Restoring The Voice Of Hawaii's Native Forests, Sat, Aug 27, 9 a.m. – 5 p.m., Volcano Art Center Gallery in Hawai'i Volcanoes National Park. Select artworks from the exhibit that officially opens Sept 3 will be on display. Free; park entrance fees apply. 967-8222

Palm Trail Hike, Sat, Aug 27, 9:30 a.m. – 12:30 p.m., Hawai'i Volcanoes National Park's Kahuku Unit. This free, moderately difficult, 2.6-mile, loop-trail hike provides one of

the best panoramic views Kahuku has to offer. nps.gov/havo

Print & Book Signing with Dietrich Varez, Sat, Aug 27, 10 a.m. – 2 p.m., Volcano Art Center Gallery in Hawai'i Volcanoes National Park. Free. 967-8222

Kamehameha Butterflies, Sat/Sun, Aug 27/28, 11 a.m. – 1 p.m., Volcano Art Center Gallery in Hawai'i Volcanoes National Park. Photographer Lanaya Deily shares secrets of the species. Free. 967-8222

Hi'iaka & Pele, Sun, Aug 28, 9:30 – 11 a.m., Kahuku Unit of Hawai'i Volcanoes National Park. Participants discover the Hawaiian goddesses and the natural phenomena they represent on this free, moderate, one-mile walk. nps.gov/havo

Ka'ū Food Pantry, Tue, Aug 30, 11 a.m. – 1 p.m., St. Jude's Episcopal Church in Ocean View.

Little Fire Ants meeting, Tue, Aug 30, 6 p.m., Nā'ālehu Community Center. Learn about Hawai'i Ant Lab's & partners' efforts to control LFA in Ka'ū. littlefireants.com

Water Bottle Spirals, Wed, Aug 31, 3:30 – 5 p.m., Pāhala Community Center. Grades K-8 register Aug 22 – 26. 928-3102



Independence Inspires Most Patriotic, Most Elaborate

Thy Word Ministries - Ka'ū won Most Patriotic and Most Elaborate went to Nā'ālehu's South Side Shaka Restaurant in Nā'ālehu's Independence Day Parade. See more Nā'ālehu and Volcano parade photos in the July 2, 3, 4, and 5 editions of www.kaunewsbriefs.blogspot.com.

Photos by Ron Johnson



EXERCISE & MEDITATION

Pāhala Pool Schedule: Adult Water Exercise Mon/Wed/Fri 9 – 10 a.m.; Adult Lap Swim Mon – Fri 10 a.m. – 12 p.m., Sat/Sun 10:30 – 12 p.m.; Public Recreational Swim Mon – Fri 1 – 3:15 p.m., Sat/Sun 1 – 4 p.m.; 928-8177 or hawaiicounty.gov/pr-recreation

Gentle Senior Yoga, Mon/Wed, 2:30 – 4 p.m., Nā'ālehu

Hongwanji. Senior price \$10 for 10 sessions. Stephanie Pepper, 937-7940

Pilates Plus, Mon/Wed, 4 – 5 p.m., Discovery Harbour Community Hall. Open to all ages. Exercise by DVD; bring your own equipment, ball and mat. Free w/donation of non-perishable food. Judy Knapp, 939-8149

Youth Volleyball, Mon – Thu, 4:30 – 7 p.m., Nā'ālehu Community Center. For ages 8 – 12. 939-2510

Zumba Fitness, Mon/Thu, 5:30 p.m.; Sat, 9 a.m., New Hope Christian Fellowship in Volcano. Certified instructor Linda Fanene, 990-3835

Open Free Play Basketball & Volleyball for Adults, Mon/Wed, 6 p.m., Nā'ālehu Community Center. 939-2510

Zumba, Mon/Thu, 6 – 7 p.m., Nā'ālehu Community Center. Certified Zumba instructor Erin Cole, 938-4037

Aikido, Mon/Wed, 6 p.m., Pāhala Hongwanji. Alan Moores, 928-0919 or arbyalan2011@gmail.com

Open Free Play Volleyball for Youth, Tue/Thu, 6 p.m., Nā'ālehu Community Center. 939-2510

care practices that balance the body for health and vitality. Beginners welcome; sliding donation \$5 - \$10. Shary, 929-7647

Country Line Dancing, Thu, 6:30 – 7:30 p.m., Discovery Harbour Community Hall. For men & women; no partner required. Free & easy lessons (a new dance each week) for beginners & intermediate. Suzanne, 930-4678

DAILY & WEEKLY EVENTS & ACTIVITIES

Punalu'u Bake Shop Music Lineup: Richard Zazzi Mon, 9 a.m. – 1 p.m.; Gary Cole, aka Foggy, Wed/Sat, 11 a.m. – 1 p.m.; Uncle Sonny Wed/Sat, 1 – 5 p.m.; Tui Masaniai Fri, 10 a.m. – 2 p.m.

Volcano Farmers Market, Sun, 6 – 10 a.m., Cooper Center. Fruits and veggies, swap meet and more. EBT welcome.

Niaulani Nature Walks, Mon, 9:30 a.m., Volcano Art Center in Volcano Village. This one-hour nature walk travels through a portion of old-growth Hawaiian rain forest on an easy, 1/7-mile loop trail. Free (calabash donations welcome). 967-8222 or volcanoartcenter.org

Pāhala Senior Center: Lunch served Mon – Fri, 10:30 a.m. for residents aged 60+. Julie, 928-3101

Nā'ālehu Senior Nutrition Center (Hawai'i County Nutrition Program), Lunch served Mon – Fri, 10:45 a.m. for residents aged 60+, greater Nā'ālehu area. 939-2505

Ocean View Nutrition Site and Senior Club hosts activities at St. Jude's Church on Mon/Wed/Fri from 8:30 a.m. and provides lunches 11 a.m. – 12:30 p.m. for seniors 60+. Donations requested.

Zhineng Qigong, Mon, 2 – 4 p.m., Cooper Center in Volcano Village. \$10 suggested donation. alohachigong@gmail.com

Qigong Classes, Tue, 9 – 10:30 a.m. Ocean View Community Center. \$5. John Adams, 929-7177

A Walk into the Past, Tue, 10 a.m., 12 p.m. & 2 p.m., Kīlauea Visitor Center and Whitney Vault in Hawai'i Volcanoes National Park. Ka'ū resident Dick Hershberger brings Hawaiian Volcano Observatory founder Thomas Jaggar to life.

Knit-Wits, Tue, 1 p.m., Ocean View Community Center. 929-7033

Ka'ū Driver License Office, Tue/Wed by appointment. 854-7214

Family Movie Matinee, Tue, 3 p.m., Nā'ālehu Public Library. Free movies plus free popcorn. 939-2442

Family History/Genealogy Workshops, Tue, 4 – 6 p.m., Nā'ālehu Mormon Church. Theresa Ducret presents free, online workshops. Appointments at 238-6221.

Basic Computer & Internet Classes, Tue, 5:30 & 6 p.m., Pāhala Public & School Library. Debbie, 928-2015

Kanikapila Jam Sessions, Tue, 5:30 – 7 p.m., Volcano Art Center in Volcano Village. 967-8222

Ka'ū Farmers Market, Wed, 8 a.m. – noon, Shaka's Restaurant in Nā'ālehu. Produce, Hawaiiana, arts and crafts, fresh baked goods.

Nā'ālehu Market, Wed/Sat, 6:30 a.m. – 2 p.m., Ace Hardware. Produce and locally made products.

Community Bookstore, Wed, 10 a.m. – 3 p.m. at Kauaha'ao Church in Wai'ōhinu. 938-0411

Ka Lena Na Keiki O Ka'ū, Wed, 4 – 6 p.m., Ocean View Community Center. Nonprofit Family Support Hawai'i sponsors this free talent group, with Chassie Cantiberos teaching song and dance. 430-7886

Game Night, Wed, 6:30 – 9 p.m., Discovery Harbour Community Hall. Fun games & great conversation. Open to the public. Potluck first Wednesday of each month begins at 5:30 p.m.; bring a favorite dish for six. Sheri, 929-9258

Ka Lae Quilters, Thu, 10 a.m. – 2 p.m., Discovery Harbour Community Center. 238-0505

VA Center for Veterans, Thu, 10 a.m. – 1 p.m., Ocean View Community Center. David, 329-0574

Color Me Happy, Thu, 3 – 6 p.m., Nā'ālehu Library. Coloring club for all ages. 939-2442

Free Dinner, Thu, 4 – 6 p.m., Ocean View Community Center. Bring a can; have a meal. Everyone welcome; volunteers needed. Donations accepted c/o OVCC. 939-7033

Desperately Seeking Serenity AFG meeting, Thu, 5 p.m., St. Jude's Episcopal Church in Ocean View. Sandy, 557-9847

Women, Infant, Children Services, Fri (except holidays) at various locations. 965-3030 or 934-3209

Aloha Fridays, 11 a.m. – 1 p.m., Volcano Art Center Gallery porch at Hawai'i Volcanoes National Park. Variable hula art offerings. Everyone welcome. Free; donations welcome; park entrance fees apply.

Art Fridays, 1:30 – 2:30 p.m., Kahuku Park. For ages 5 – 12. 929-9113

Ka'ū 'Ohana Band Rehearsals, Fri, 4 p.m., St. Jude's Church in Ocean View. Instruments provided; no experience necessary. Ka'ū School of the Arts, 854-1540 or info@kauarts.org

Live Entertainment at Hana Hou Restaurant, Fri, 5:30 p.m. in Nā'ālehu. 929-9717

Live Music Fridays at South Side Shaka's, Nā'ālehu. 929-7404

Ocean View Farmers Market, Sat, 7 a.m. – noon, Pōhue Plaza.

Alcoholics Anonymous meetings: One Day at a Time Group, Sat, 6:30 p.m., Cooper Center; Friday Night BBQ Meeting, Fri, 5 p.m., Wai'ōhinu (929 -7674); Happy, Joyous and Free Group, Mon/Thu, 7 p.m. and Sat, 5 p.m., St. Jude's in Ocean View. West Hawai'i Intergroup (329-1212) or the Hilo office (961-6133)

KONA KA'Ū REALTY

Tom & Myriam Edwards

Phone: 808-937-6534

Email: T3@Aloha.net

Search our Hawai'i MLS at:

www.konakau.com



NŪPEPA NĀ'ĀLEHU

Volume 14, Number 8

The Good News of Ka'ū, Hawai'i

August 2016

Public Meeting Aug. 30 Tackles Little Fire Ants

Hawai'i Ant Lab holds a public informational meeting about Little Fire Ants on Aug. 30 at 6 p.m. at Nā'ālehu Community Center.

LFA were first detected in Nā'ālehu in late 2013. The discovery triggered the need for a community-based-management project.

The infestation was an ideal candidate for spot eradication, according to Heather Forester, of Hawai'i Ant Lab, because the community is small and geographically separate from other infested areas. The infested areas included several private residences, a portion of Nā'ālehu Park, the 76 Gas Station, commercial properties, the fire station, Ka'ū Family Health Center and a waterway. The community conducted a total of eight treatments

over a one-year period, where permission was granted, during 2015 and 2016.

Post-treatment surveys were conducted in February to see if LFA were still being detected. The isolated acre near the fire station was free of LFA, but LFA were detected in several locations within the larger infested area adjacent to the waterway that runs mauka-makai in the center of town.

The meeting will focus on the project's next steps, including follow-up baiting treatments and surveys. For more information on Little Fire Ants, see www.littlefireants.com.

"A special mahalo to the Nā'ālehu community members who assisted the Hawai'i

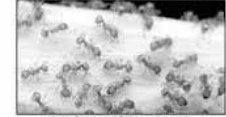
Ant Lab, The Nature Conservancy, and Big Island Invasive Species Committee in surveys and treatments," Forester said. "Without their support, the project would not have

INVASIVE PEST ALERT:

Little Fire Ants have been identified by Hawai'i Ant Lab in samples taken in Nā'ālehu

If you've been stung by a Little Fire Ant (LFA), you know why these little ants are such a major problem. By themselves they spread slowly, but with the help of people, they spread very quickly. They are transported via produce, potted plants, landscape materials, plant cuttings, etc.

LFA like warm, wet, and shady places such as trees, bananas, palms, potted plants, and other vegetation with lots of nooks and crannies for locating their nests. Infestations frequently reach densities of 20 million workers and 40,000 queens in an average house lot (10,000 sq. ft.). Unlike other ants, LFA do not build noticeable nests and are as likely to be found in tree canopies as they are under rocks and logs.



Prevention is the first line of defense against LFA. It's not difficult, but does take vigilance and knowing what to look for. Remember, LFA are "bitch-biter" ants. Check anything you bring to your home to make sure you are not accidentally bringing LFA as well.

We need your help to identify the extent of the infestation in Nā'ālehu. Use the HDOA "chopstick" method to survey your property for LFA.



Snear a THIN layer of creamy peanut butter onto the sticks and place them where LFA might be, such as shady, moist areas on the soil and in vegetation. Numbering sticks will help to determine which areas are in fact infested with LFA. Check the sticks after about one hour to see if you have attracted ants.

LFA are slow moving, completely orange in color and are as long as a penny is thick. If you see ants on the stick that match this description, drop the stick into a Ziploc bag, place it in the freezer overnight, and mail them to the Hawai'i Ant Lab for identification. Please include your contact info to receive results.

Hawai'i Ant Lab,
Pacific Cooperative Studies Unit,
University of Hawai'i
16 E. Lanikaula Street
Hilo, Hawai'i 96720
Telephone: (808) 315-5656

The Hawai'i Ant Lab, The Nature Conservancy, and Big Island Invasive Species Committee will host a Public Informational Meeting on a to be determined date in January 2015. Stay tuned!

For more information, visit our website:
www.littlefireants.com

MIRANDA'S FARM
An Award Winning Ka'ū Coffee
www.Mirandasfarm.com
Ocean View Farmers Market on Saturdays
Flyin' Hawaiian in Nā'ālehu, Mon, Wed, Sat
mirandasfarm@yahoo.com
808-333-4333, 929-7572

76 Union 76 Wiki Wiki Mart
Station opens daily 5 a.m. to 11 p.m.

- Hot dogs, Sandwiches, Heat & Serve Entrees
- Bulk Costco Foods
- Beer & Wine
- Propane, 10 a.m. - 6 p.m. Daily

Visit Wiki Wiki Mart on Facebook

929-7135 • In Nā'ālehu on Hwy 11
Next to Naalehu Park towards Hilo

hawaiihomebuy.com
View featured listing and Hawaii MLS
Teresa Anderson, S
(808) 937-7919
teresainhawaii@gmail.com
Kona Ka'ū Realty
We are proud to announce
Teresa Anderson is on our 5 Star
Team. Mahalo. With Aloha!
Tom Edwards, PB Kona Ka'ū Realty

B&E PROPANE

OPEN DAILY 9 AM - 5 PM
LOCATED ON MELIA ST.
IN NĀ'ĀLEHU
ALSO AVAILABLE
WELDING & FABRICATION
(808) 896-0841

Map showing locations in Nā'ālehu:

- Ka'ū Auto Repair
- Cable Vision
- 3D Welding & Fabrication
- B & E PROPANE
- Melia St.
- The Gas Company
- ACE Hardware
- Punalu'u Bakery
- Mamalahoa Highway
- Ka'alaiki Road

KA'Ū FAMILY HEALTH AND DENTAL CENTER

High quality, affordable health care.
(Now that's a good prescription.)

We offer comprehensive primary medical, dental, and behavioral health care to meet your needs at every stage of life.

MEDICAL STAFF
Diana Jeannotte, MD
Debra Barra, LCSW

MEDICAL Hours of Operation
Monday through Friday
7:30 AM to 5:30 PM

DENTAL Hours of Operation
Tuesdays & Thursdays
8:30 AM to 4:30 PM

For an appointment, call 929-7311

95-5583 Mamalahoa Hwy.
bayclinic.org

The WAY to all your Big Island Real Estate Needs!

Francis B. McClelland (Mack), RB
Office: 808-315-5343
Fax: 888-612-6929
P.O. Box 104
Naalehu HI 96772
mack717@hawaii.rr.com

CAMINO PROPERTIES
www.CaminoProperties.com

KAI ROBSON RS
KA'Ū REALTY

Contact Kai Robson RS at
Cell 808-989-4464 & visit him at
Ka'ū Realty in Downtown Nā'ālehu.
krobson123@gmail.com

Kama'aina Kuts Salon
Corrine
Owner/Stylist
For an appointment, call
939-7099

LOCATED IN NA'ALEHU
BEHIND ACE HARDWARE

MAHALO!

'O Ka'ū Kākou thanks all who contributed to the 2016 Nā'ālehu Independence Day:

- ★ Floyd Brooks
- ★ Nā'ālehu Elementary School
- ★ Hawai'i County
- ★ Nā'ālehu Hongwanji Buddhist Mission
- ★ Ka'ū Auto Repair
- ★ Washtime LLC
- ★ Miranda's Farms

Thank you for your patriotic support of our community.

KAHUKU TO MILOLI

Volume 14, Number 8

The Good News of Ka'ū, Hawai'i

August 2016

County Council Candidates Share Views with Constituents

Hawai'i County Council District VI candidates participated in a forum in July. Incumbent Maile David, of Captain Cook, and challenger Raina Whiting, of Ocean View, spoke with about 45 constituents at Ocean View Community Center.

Lack of police service to Ocean View was a major topic. Moderator Mike DuBois asked, "How can we get police to spend more time here?"

Whiting said the issue is "at the heartbeat of Ocean View's problems. We need that support here."

David said she has spoken with the Po-



County Council member Maile David and challenger Raina Whiting listen as Greg Smith, at right, discusses farming in Ka'ū. Photo by Ron Johnson

lice Department and that lack of secure communication equipment is part of the problem. She said that while the county-owned fire station has such equipment that safeguards personal information, Ocean View's police substation is rented, and the county doesn't want to install the equipment there. She said the county is looking for a facility to accommodate that need. "We need more money to fund these services," she said.

Whiting suggested that more transient accommodations tax funds from the state would help, but David pointed out that when mayors ask for more, "the state shuts them down."

One resident, a former police officer, said he "couldn't believe the absence of police" when he moved here. "The criminal mind knows that we're in an area where they know they can get away with (crime)."

Whiting said, "The police don't serve us. We need to keep the Police Department accountable."

One resident cited police officers' inaction regarding filing reports. He said burglary victims, for example, need reports

when filing claims, but police hesitate to make reports.

Another said the problem is larger than the Police or Prosecutor Departments. She said meth is a major contributor to crime and that it's the same people committing multiple burglaries. "We know who they are," she said.

"Meth needs to be dealt with medically, not judicially," she said. She suggested the need to bring agencies together to solve the problem. "Politicians need to learn about addiction and how to deal with it."

David said the council "can encourage the state but can't make the state do anything," as far as increasing

funding for more police service.

Whiting said, "I don't believe in obstacles" and that she looks for ways to move forward.

Food sustainability and tourism were other topics discussed.

Council Candidates, pg. 13

HAWAIIAN OCEAN VIEW ESTATES DEEPWELL REPAIR

The Department of Water Supply is scheduled to repair the Hawaiian Ocean View Estates (HOVE) well from **July 25, 2016, to approximately September 30, 2016.**

Due to this scheduled repair, the following will be in effect:

- The HOVE standpipes for water hauling trucks (mauka side) will close at 7:00 p.m. on Sunday, July 24, 2016 and will remain closed until the repairs are completed.
- The HOVE spigot station (makai side) will remain open during the duration of repairs for residential potable water needs.
- In order to meet the daily water needs of all spigot users, the Department asks that each user limit their water filling to 55 gallons or less (per Hawai'i County Code 29-5(d)).
- Alternate water spigot facilities are located in Wai'ōhinu and Ho'okena.

The Department of Water Supply apologizes for any inconvenience this may cause, and appreciates your patience and understanding.

For further information, please contact Daryl Ikeda, Chief of Operations, at (808) 961-8790.

DEPARTMENT OF WATER SUPPLY
COUNTY OF HAWAII

"The Department of Water Supply is an Equal Opportunity Provider and Employer."

Posted on the Internet at:
www.hawaiiidws.org

Wai Moku
WATER DELIVERY

CALL RUDY
929-9222

All Work Guaranteed - Towing Service Available - We service Trucks and 4x4s - State Safety Checks - Master Technician RD#3789

AutoTech
SOUTH KONA'S AUTO REPAIR CENTER

• Advanced Computer Diagnostics
• Air Conditioning
• Brakes
• Clutch and Exhaust System
• State Safety Inspections
• Oil Changes
• Suspension
• Wheel Alignment

81-981 Halekū'i St.
Kealahou, HI 96750

322-8881

VISA, MasterCard, American Express, Discover, AutoCare Center, ASE

BJ'S EXCAVATION & HAULING

PH.808 333-0789
PUC 5238-C

NEED WATER? WE DO WATER HAULING

- Specializing In:
- | | | |
|--------------|-------------|-----------------|
| *Water | *House Pads | *Septic Systems |
| *Trenching | *Rock Wall | *Demo |
| *Driveway | *Lowboy | *Dump Truck |
| *Coffee Farm | *Bulldozing | *Free Estimates |

Propane

929-9666

South Point U-Card Inc.

Hours
7:30 – 5:00, M – F
Sat. 8:00 – 12:00, Closed Sun.

- | | |
|---------------------|--------------------------------------|
| • Hawaiian cement | • Sand #4 (for water tanks) |
| • Redi-mix concrete | • Rock #3 |
| • Rebar #3#4#5 | • ¾ minus base coarse |
| • Wire 6x6x10x10 | • Cinders, red & black |
| | • Pier blocks, misc. concrete prods. |

Construction Equipment Rental

- Compactors
- Cement finishing
- Generators
- Scaffolding
- Ladders
- Pressure washer
- Compressors
- Painting equipment
- Floor finishing equipment
- Welding equipment
- Automotive equipment
- Cordless hand tools
- Tools
- Power tools
- Hand tools
- Trailers
- String trimmer
- Chainsaws (we sharpen)
- Lawn mower
- Party equipment

Small Engine Sales & Service

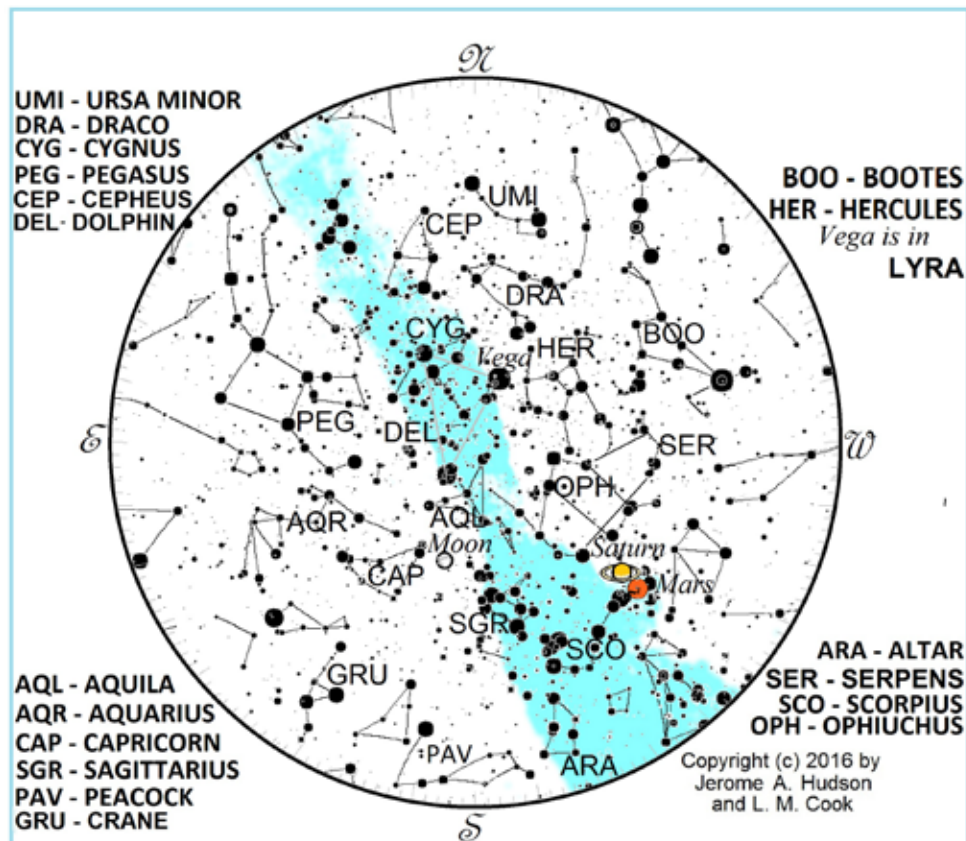
AUTHORIZED DEALER, PARTS AND SERVICE: Shindaiwa, Wacker, Titan, airless, Echo, Honda Engines, Snapper, Goldblatt, Briggs & Stratton, and Grimmer Schmidt

USED MOTOR OIL DROP OFF: 10-gallon limit per visit for Do-It-Yourself oil changers. Must log in during open hours only (no charge).

Hawaiian Ocean View Ranchos • Below gas station
P.O. Box 6182, Ocean View, HI 96737 • Stan and Marianne Troeller, Proprietors

SERVING THE KA'U AREA OVER 25 YEARS





The star chart is produced from a sky Atlas program written by Jerry Hudson, who has given us permission to publish it. Thanks, Jerry!

The constellations are presented with their three-letter abbreviations, with (usually) the Latin names shown in the margins. Stars as faint as magnitude-six are shown. This is done to take advantage of the truly dark skies Ka'ū is blessed with when there is no bright moon and the skies are clear of fog.

Stars over Ka'ū - August 2016

by Lew Cook

Bright Mars continues to highlight the August sky when the moon is absent, and Saturn keeps it company. Mars is out of the pincers of the scorpion and has moved nearer to its color twin, Antares. Early in the month, look at Mars, then to the left is Saturn. South of Saturn is Antares. If you ever get an opportunity to look at Saturn through a telescope, take it! Be sure you notice the moons of Saturn, as they change positions with their parent planet, just as our moon does with us here on Earth. Unlike Earth, Saturn has many more natural satellites (moons) than we have. More are being discovered each year or so. If we consider the particles in its rings as "moons," well – Saturn has more moons than any planet.

It is that way, anyway! Saturn has 62 named moons and countless minor moons. Here's an interesting fact about Saturn: its density is less than water, the only planet

with that distinction. All the other planets – even the other gas giants – have overall densities greater than water. I'll leave it to your imagination about floating Saturn in an enormous bathtub!

One of Saturn's moons – Enceladus – is believed by gravitational experts to have liquid water under a thick shell of ice and over a solid core. This finding generated lots of excitement among those who are actively looking for possibilities of life throughout the universe.

Regarding constellations, big birds everywhere! Well, from north to south, anyway. Starting in the north is Cygnus the swan, flying south toward another large bird, an eagle that is flying north. Will they collide? Nope, they are professional fliers and have been flying all their lives! Pavo, the Peacock, is there, crossing the meridian just above the southern horizon, resting on

the ground, as peacocks do. But what has startled the crane? It is springing to fly, with its legs bent and neck extended. Presumably, it was resting on the Earth and appears to be springing into flight. There are two other birds that haven't risen yet: the Toucan, which has the tip of its beak pointing northward. It will be visible, just on the horizon in the south, in October; also there is the Phoenix, the mythical bird that has risen from its own ashes. There are other birds represented in the constellations, but none as large as those discussed here. Those will be discussed in their season.

Meanwhile, we have Ophiuchus, the snake handler, busily occupied with the wriggling snake, Serpens, which has two parts: the front, Serpens Caput, and the tail, Serpens Cauda. While neither of these two parts is labeled on the chart, Serpens is (SER). They ought to be easy to find. Saturn is low in Ophiuchus, and he may be standing on it! At least that's what it looks like. Saturn at chart time (10 p.m. on Aug. 15) is only at an altitude of 34 degrees, while Mars

is six degrees lower in the sky.

The moon is pointed to this night by the Summer Triangle, comprised of Vega, Deneb, the brightest star in Cygnus (also called the Northern Cross), and Altair at its base. Since the moon is nearly full, there isn't much else to see tonight.

Friday Sunrise and Sunset times:

Date	Sunrise	Sunset
Aug 5	6:00 a.m.	6:55 p.m.
Aug 12	6:02 a.m.	6:51 p.m.
Aug 19	6:04 a.m.	6:46 p.m.
Aug 26	6:06 a.m.	6:41 p.m.

Moon Phases

Date	Moon Rise	Moon Set
New Moon		
Aug 2	5:53 a.m.	7:01 p.m.
First Quarter		
Aug 10	12:40 p.m.	12:21 a.m.*
Full Moon		
Aug 17	6:31 p.m.	6:23 a.m.*
Last Quarter		
Aug 23	12:13 a.m.	12:21 p.m.*

*The next morning



HIGH SPEED INTERNET

Locally Owned and Operated

Serving Kau for over 10 Years

Local Towers Feed Directly to

Island Wide Fiber Optic Network



Reliable Internet Service

99% Uptime. Not effected by weather clouds or rain. Always On.



Always on Connection

You won't miss the sound of your modem. Just turn your computer on and go.



Low Setup Fee

You don't buy any equipment so installation fees stay low.



No Contracts

Month to month and Vacation plans available. We let the customer decide.



Connect to the World

Communicate with people all over the world. Take college classes online.



Work from Home

Transfer large files. Connect through VPNs to get your work done from home.



Listen to Radio Stations

Enjoy unlimited radio channels and sites on the web, NPR, Pandora, iTunes, Spotify...



Unlimited Data Plans

No data caps or downloading limits means you can stream all you want.



Play Online Games

Low ping times means you won't get Frustrated due to lag. Don't get booted from another game.



24/7 Live Phone Support

Speak to a live person right away if you have questions about your account or need help with a technical issue.



Stop Waiting



Go With Broadband

Call Today For Your Free Consultation : 808.929.7668

Check our Website : www.alohabroadband.com

Kea'au Recycling and Reuse Center

Open 8 a.m. – 5 p.m. Daily
(closed Thanksgiving, Christmas, New Year's Days)

Home Remodeling and Reuse Tent

Next door to the Kea'au Transfer Station

Low Prices at our "Still Good Stuff" Garage Sales

- latex paint selection @ \$5/gallon
- furniture, fixtures, lighting & more

Contractor drop-offs welcome - help divert usable leftovers from the landfill.



Highway 130
1st left past the
Hawaii Humane Society
Pahoa-bound

Call 895-6815
for more information.

KEEPING HEALTHY IN KA'Ū

Volume 14, Number 8

A Journal of Good Health, Food and Fitness

August, 2016

New Prenatal Wellness Services Available from Uhane Pohaku

Free prenatal wellness services are available in Ka'ū. Pregnant women can receive hands-on support and learn basic prenatal self-care on Wednesdays in Pāhala.

"Women are intelligent, and we want what's best for our babies. Given the tools and the opportunity, we will always prioritize our children's health," said Tara Compehos, who is offering the services in partnership with Uhane Pohaku Na Moku O Hawai'i, Inc. Compehos served childbearing families on O'ahu for 10 years before



Women can receive free prenatal wellness services in Ka'ū. Image from U.S. FDA

Council Candidates, cont. from pg. 11

DuBois asked, "What if a natural disaster happens?" and trucks stop delivering food to markets in Ocean View?

David said she hopes Ocean View residents begin growing more food using technology like aquaculture. She said there in a person growing "beautiful lettuce" even though soil there is limited.

Whiting said it's also possible for local farms to grow food for sale. A teacher at Nā'ālehu School, she wants see vocational education programs to teach how to grow food as well as train students in trades.

Greg Smith, owner of Earth Matters Farm and president of Hawai'i Farmers Union United Ka'ū Chapter, said, "You can make money farming. There should

be massive support for education about farming." Smith also expressed his support for growing industrial hemp, which he said has many uses and revitalizes soil.

"A lot of our families were sustained by ag," said David, who grew up in a family that purchased only what they could not grow. "We've done it; we got out of it; we need to get back in."

Whiting said she also supports local food and hemp production.

"What can we do to attract tourist dollars?" DuBois asked. David suggested placing signs on the highway for more destinations than only Kona and Hawai'i Volcanoes National Park "to make people aware of what we have here." She also praised in-

Council Candidates, pg. 16

moving to Ka'ū in 2015. She apprenticed under master midwife Medrakanoenapua and holds a Full Midwifery Arts degree from Matrona school of midwifery. She was educated in lomilomi by Auntie Margaret and is a DONA-educated doula. She holds

a bachelor of arts degree from New York University.

Pregnancy wellness and self-care open houses are held at 'Ōhi'a Hale, 96-1186 'Ōhi'a Street every Wednesday from 10 a.m. to 3 p.m.

Preschool Teaching Assistant – Ka'ū (Immediate openings)

Do you love children and have experience working with young children and their families? Tūtū & Me is seeking an energetic, outgoing person for full-time & on-call teaching assistant position.

Min. qual.: High School Diploma; Early Childhood Education or related course work and/or experience working with children preferred; access to vehicle, valid driver's license, safe driving record, and at least \$100K in bodily collision per person and \$25K in property damage liability insurance coverage.

Position requires:

Good oral and written communication skills; ability to interact with caregivers and keiki in a helpful and professional manner, maintain confidentiality, analyze and problem solve, multi-task and prioritize; lifting, loading and carrying up to 40 pounds on a daily basis, ability to sit and work on floor; kneel and bend. Successful applicants will exhibit courteous and professional demeanor; possess strong interpersonal skills, work well with other team members and perform other duties as assigned, which may include using computer, other office equipment, cell phone and hand truck.

We offer a competitive salary & outstanding benefits package including: Medical/Dental/Drug/Vision, Flexible Spending Plan, 403b Retirement Plan, vacation & sick time, 14 paid holidays, & more.

For more info visit website: www.pidfoundation.org/about/careers

Please e-mail resume & application w/ cover letter to HR@pidfoundation.org or fax to 808-440-6619.



Woke up feeling sick and need to see us?
Same day sick appointments available!
Call 932-4205 for an appointment.

ACCEPTING NEW PATIENTS

Ka'ū Hospital's Rural Health Clinic welcomes Dr. Carey Gear, a board certified Family Medicine physician with over 25 years of experience. He and his ohana are happy to call Ka'ū their home.

Dr. Gear joins Dr. Dexter Hayes, Suz Field, APRN and the clinic staff-all who live and work in Ka'ū.

To schedule an appointment, call the clinic at 932-4205.



- Well child check-ups
- Chronic disease management (diabetes, hypertension, asthma)
- Birth control options
- X-rays and lab conveniently available

1 KAMANI STREET IN PAHALA

This ad is paid for by Ka'ū Hospital Rural Health Clinic

KA PEPA VOLCANO

Volume 14, Number 8

The Good News of Ka'ū, Hawai'i

August 2016

100th Anniversary, cont. from pg. 1

festival will be held near Kīlauea Visitor Center and is all about sharing authentic Hawaiian cultural practices. More than a dozen cultural practitioners will demonstrate how native Hawaiians integrate the natural world into their traditions. Interactive demonstrations include lei wili (lei making), mākau (Hawaiian fishhook), pala'ie (loop and ball game), how to make and play the 'ohe hano ihu (Hawaiian nose flute), ulana niu (coco-nut frond weaving) and much more.

Festival performers include Kumu

Hula Mamo Brown and Hālau Ulumamo o Hilo Palikū, Kenneth Makuakāne, Hālau o Akaunu and Kumu Hula Manaiakalani Kalua, Kai Ho'opi'i, Haunani Medeiros and kupuna (elders) of Haunani's Hula Expressions and Diana Aki.

The Cultural Festival also showcases the intersection of culture and science in Hawai'i. The BioBlitz is a fun and hands-on opportunity for families and individuals to observe and document the biodiversity that thrives in the lava flows and native rainforests of Kīlauea and Mauna Loa volcanoes. Meet and work alongside scientists and alaka'i (experts) and discover an exciting array of life the park protects. Choose from more than two dozen field inventories like *Six Legs at the Summit*, a birding excursion called *That Thing with Feathers*, and *Bebop Botany Walk on Crater Rim Trail*. The field inventories are free and led by experts at the forefront of conservation, science and traditional Hawaiian culture. Registration is required; sign up at fhvnp.org.



Keiki and alaka'i head into the rainforest on a BioBlitz species inventory at last year's BioBlitz. NPS Photo by Janice Wei

Families and visitors can further discover how science and culture combine by visiting the BioBlitz science and cultural booths at the festival. Meet representatives of the 'Alalā Project, Mokuāpapa Discovery Center and others to learn about important conservation efforts statewide. Visit Hale Ho'ike, the BioBlitz living laboratory where Saturday's discoveries will be documented, and look through a microscope at some of the tiniest but important findings.

The BioBlitz field inventories run from 7 a.m. to 1 p.m., and the Cultural Festival/

BioBlitz is from 10 a.m. to 3 p.m. Entrance and all events Friday and Saturday are free and family-friendly. Coolers, pets and alcohol are not permitted.

The Nā Leo Manu, Heavenly Voices, Hawaiian concert series and the Hawaiian Cultural Festival & BioBlitz are supported by the park's nonprofit partners, the Friends of Hawai'i Volcanoes National Park and the Hawai'i Pacific Parks Association.

In addition, the National Park Service invites everyone to enjoy all 412 national parks to celebrate its 100th birthday for free. All fee-charging parks, including Hawai'i Volcanoes, Pu'uhonua o Hōnaunau National Historical Park in West Hawai'i and Haleakalā National Park on Maui, are free from Thursday, Aug. 25 (the centennial anniversary of the NPS) through Sunday, Aug. 28.

To find out what's happening throughout this centennial year, see nps.gov/havo. To learn about centennial events at other national parks, see FindYourPark.com.

KILAUEA LODGE
Volcano Village • 967-7366

Breakfast & Lunch Daily • Sunday Brunch
Dinner Nightly ~ reservations recommended
Romantic Rooms • Gift Shop
Gift Certificates
www.kilauealodge.com

VOLCANO ART CENTER
WHERE PEOPLE, ART AND NATURE MEET

August Events

Gallery Events

Endemic Understanding continues through 8/28
Cultural Festival/Bio Blitz - 8/27
Dietrich Varez Book Signing - 8/27
Kamehameha Butterflies - 8/27
'Alalā Preview & Silent Auction - 8/27 & 28

Aloha Fridays on the Porch

Hula Arts August 20

Hula Kahiko Nā Kumu hula Keikilani Curnan & Liana Aveiro with Hālau Waiau

Nā Mea Hula with Loke Kamanu and 'ohana

Niaulani Campus

8/9 - 9/13 ~ Hand Building w/Clay Evening
8/9 - 9/13 ~ Kids Clay Series (Ages 9-12)
8/10 - 9/14 ~ Kids Clay Series (Ages 6-9)
8/11 - 9/15 ~ Hand Building w/Clay Afternoon
8/11 ~ J. Dawson's "Illustrations 1978-2016"
Exhibit Opening & Presentation
8/20 ~ Zentangle®: Reticula and Fragments

Call 967-8222 or visit www.VolcanoArtCenter.org

Gallery Promotes *Endemic Understanding*

Local artists are featured in *Endemic Understanding*, on display from 9 a.m. to 5 p.m. daily through Aug. 28 at Volcano Art Center Gallery in Hawai'i Volcanoes National Park. The multi-media exhibition showcases the extraordinary biodi-

versity found within Hawai'i Island's five national parks. The exhibit is open to the public and free of charge. Park entrance fees apply, with the exception of Aug. 25-28 when park entrance fees are waived in celebration of the National Park Service Birthday Weekend.

The artists, including Margaret Barnaby, Heide Cumes, Lanaya Deily, Jack Jeffrey, Susan Litteral, Liz Miller and Karen Schuster were selected from the 2015 Hawai'i Nei exhibition celebrating native species and asked to further investigate the plants, animals and environments found within Hawai'i Island's national parks yet found nowhere else. Through a series of educational events, the artists gathered information that helped them craft three to five



Endemic Understanding includes this metal wall sculpture by Liz Miller. Image from VAC works each, based on their unique artistic perspective.

"The exhibition title *Endemic Understanding* refers to the ecological state of the species being unique to a defined geographic location, in this case Hawai'i Island's national parks," gallery manager Emily C. Weiss said. "Through the exhibit, we hope to honor the centennial celebration of the National Park Service and its role in helping to protect and understand our natural resources."

FRIENDS OF HAWAII VOLCANOES NATIONAL PARK

SUNDAY WALK IN THE PARK

Sun. August 14 • 9am - 2pm
Free to Friend's Members - Not a member? Join now!

Join guide Tim Tunison on this month's five-hour, four-mile hike where we will explore the scenery, plants, birds, and geology of the subalpine zone of the Mauna Loa Trail. "Sunday Walk in the Park" is free for Friends members, and non-members are welcome to join our nonprofit organization in order to attend. To register, contact 985-7373, email admin@fhvnp.org or visit our website www.fhvnp.org.

WWW.FHVNP.ORG • 985-7373

NOTICE TO MOTORISTS - Saturday, August 20, 2016

Saturday, August 22, 2016 - The 7th Annual Volcano Rain Forest Runs will be happening in Volcano Village. The 3 races will begin and end at Cooper Center on Wright Road. Old Volcano Road through the village will be closed from 6:45 AM - 8:30 AM Wright Road from Old Volcano Rd will be closed to traffic from 6:00 AM - 12:00 PM Haunani will remain open for residents and visitors to access other village roads. Highway 11 will remain open throughout the event.

There will be Police officers directing traffic for the safety of the participants at intersections. Expect short delays. We apologize for any inconvenience this may cause.

Residents on Wright Road are asked to minimize travel from 7:30 AM to 10:30 AM when the highest concentration of runners/walkers will be utilizing Wright Road.

All Motorists are advised to use caution for the safety of runners, walkers and spectators. If you have any questions please call: 315-1170

ENERGY & SUSTAINABILITY IN KA'Ū

Volume 14, Number 8

The Good News of Ka'ū, Hawai'i

August 2016

Hawai'i Wildlife Fund Lifts .75 Tons Trash from Ka'ū Coast

Hawai'i Wildlife Fund and 41 volunteers helped remove nearly 1,485 pounds of marine debris from the shoreline at Kamilo Point last month. The litter included more than 200 pounds of derelict fishing nets, 150 pounds of large loose debris, 45 pounds of Method recyclables, 80 pounds of micro-plastics, 890 pounds of miscellaneous debris and dozens of toys, bottle caps, five cigarette

lighters, six plastic crates, two large plastic pallets and a plastic teddy bear coin bank.

"Mahalo to Norwex, Kona Surf Film Festival and Hoffman Leung for the financial support to host this cleanup," said coordinator Megan Lamson. "And a special thanks goes to Hawai'i Kombucha for the delicious hibiscus kombucha tea keg to keep our volunteers happily hydrated. Our heart-

felt gratitude also goes out to all the individuals and groups that joined us, including Nurdle in the Rough Jewelry, Hawai'i Outdoors Institute, Pulama Lanai, Surfrider Foundation Big Island Hawai'i Chapter - Kona Kai Ea, local artists Kathleen Crabill, Don Elwing and Laurel Schultz, and many other amazing individuals and family members!"



Hawai'i Wildlife Fund regularly hosts Ka'ū Coast Cleanups such as the one at Kamilo Point in July. Photo from Megan Lamson/HWF

HWF's next Ka'ū Coast Cleanup takes place on Saturday, Sept. 24. Email cleanup@gmail.com for more information and to register.

KA'ALU'ALU OCEANFRONT RANCH

1,836 acres of gently sloping mixed pasture that flows from approximately 680 foot ASL to a protected ocean cove at Ka'alu'alu Bay.

Sweeping ocean, sunrise and coast line views!

\$2,950,000 MLS 278051

Call for map and price list or your personal showing!
Charles A. Anderson, PB (808) 895-5554 charlie@bigisle.com
Hawaii Pacific Brokers, LLC 65-1323 Kawaihae Rd.
Kamuela, HI 96743 808-885-5557
www.BigIsle.com

Recycle Used Motor Oil

FREE

YEAR-ROUND USED OIL COLLECTION FOR RESIDENTS
(10 gallon limit)

Pacific Customs, LLC

16-180 Mikahala Rd., Bldg. 80, Shipman Industrial Park, Kapa'au
989-3437 • Mon – Fri, 9 AM – 3 PM

South Point U-Cart

Prince Kuhio St., Ocean View
929-9666 • Mon – Fri, 7:30 AM – 5 PM
Sat 7:30 AM – 12 PM

ACCEPTABLE MATERIAL: Used motor oil, gear oil, shock oil, hydraulic oil, transmission oil and diesel.

UNACCEPTABLE MATERIALS: Gasoline, water, brake fluid, solvents, thinners, paints, antifreeze, anything mixed with oil. Do not use BLEACH, ANTIFREEZE or PESTICIDE containers!

*Unacceptable materials may be disposed of at County of Hawai'i Household Hazardous Waste collections.

Recycle Hawaii

For more information, visit
www.recyclehawaii.org

A cooperative project by Recycle Hawaii, County of Hawai'i Dept of Environmental Management, State of Hawai'i Dept of Health and private businesses on the Big Island.

Ka'ū Farmer's Market

Wednesdays & Saturdays, 8am-12pm
In front of Shaka's Restaurant

Kuahiwi Ranch Natural Beef

Ka'ū-grown free-range, pasture-raised, no antibiotics or artificial hormones. Pre-orders call 936-1888

Vendors call

339-1032

In operation since December 5, 2001
Brought to you by Nā'ālehu Main Street
naalehu.org

NĀ'ĀLEHU MARKET

Wednesdays & Saturdays, 8am-2pm
In front of ACE Hardware in Nā'ālehu

Pacific Quest

Organic fruits & vegetables grown by youth. Proceeds donated to our Ka'ū community!

Vendors email

richwitt1@hotmail.com

THE KA'Ū CLASSIFIED

COMMUNICATIONS, COMPUTERS

GOT CABLE? Why Settle! The Satellite Guy offers dish network anywhere on the Big Island. More channels, more choices, less money. Available where cable is not. The Satellite Guy. 929-9103.

HOME, RANCH & BUSINESS

PLUMBING CONTRACTOR - License # C-26521, Mark Berkich Plumbing, 936-7778. Custom work, New and remodel.

Water delivery call Rudy at Wai Moku Deliveries 929-9222

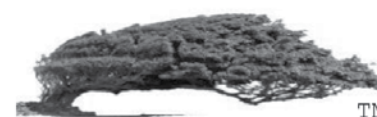
FOR SALE

Macnut, Husk, Both Fresh and composted. Red and Dirty Cinders. Soil Mix. Delivered to your property. Bob Taylor 929-8112, 936-8623.

SERVICES AVAILABLE

House/Pet Sitter available for days, weeks or months in the Kau district. I respect and appreciate caring for your sacred space and beloved pets. Call/text Robin @ 808.741.6730

Tawhiri Power LLC



Bringing *CLEAN* renewable energy to Hawaii
see us at www.tawhiri.com



Representative Richard Onishi

STATE HOUSE DISTRICT 3
"Working for our communities."

I want to thank you for the honor of letting me serve you in the House of Representatives. I am running for re-election because I feel that I have the background and experience to do more for our District, Hawai'i Island and our State. I was privileged to serve as the Vice-Chair for the Agriculture Committee, a position very important to our District. I also served on the powerful Finance Committee, the committees on Economic Development & Business; Tourism; and Veterans, Military & International Affairs, and Culture & the Arts. I am proud of my accomplishments in just my first two terms, and I ask for your support in the Primary Election. Mahalo!

Awards & Recognition:

- Hawai'i Farm Bureau – 2013 Legislator of the Year
- Big Island ARCH & Big Island Adult Foster Association – 2013 Certificate of Appreciation
- National Federation of Independent Businesses – 2014 Leadership Advocate for Small Business
- Civil Beat – Most bills passed in 2014 Session (5 of 16, 31%), tied with 5 other Representatives
- Council of State Governments West Region – 2015 Western Legislative Academy
- Japanese American Citizens League Honolulu Chapter – 2015 Certificate of Appreciation
- Junior Chamber International Hawai'i Chapter – 2016 Senate/Oldtimer of the Year

Capital Improvement & Grant-in-Aid Projects:

- 2013 – Keau Middle School - \$675,000
- 2013 – Hawai'i Island Community Development Corporation - \$1,000,000
- 2013 – Ka'u Irrigation System - \$2,500,000
- 2013 – National Guard's Youth Challenge Academy Facilities - \$5,900,000
- 2014 – Volcano Arts Center - \$15,000
- 2014 – Kea'au High School - \$275,000
- 2014 – Hawai'i Island Veterans Memorial - \$425,000
- 2014 – Ka'u High School - \$550,000
- 2014 – Volcano School of Arts & Sciences - \$618,000
- 2014 – National Guard's Youth Challenge Academy Facilities - \$2,000,000
- 2014 – Ka'u Irrigation System - \$2,500,000
- 2014 – Hilo Medical Center - \$3,285,000
- 2015 – Hawai'i Community College - \$1,500,000
- 2015 – Waikeke Uka Community Center - \$600,000
- 2015 – Mountain View Elementary School - \$230,000
- 2015 – Friends of the Volcano School of Arts & Sciences - \$285,000
- 2015 – Keonepoko Elementary School - \$1,000,000
- 2015 – National Guard's Youth Challenge Academy Facilities - \$1,675,000
- 2016 – Keau Elementary School - \$200,000
- 2016 – Mountain View Elementary School - \$505,000
- 2016 – Kau High School - \$200,000
- 2016 – Keau – Pahoa Road Improvements - \$2,500,000
- 2016 – Hilea Stream Bridge Rehabilitation or Replacement Land Acquisition - \$101,000
- 2016 – Hawai'i Island Community Development Corporation - \$350,000

Legislative Measures Passed:

- 2013 – Compensation to Lessees for Taking of Leased Farm, Ranch or Commercial Land
- 2013 – Future Farmers of America Appropriation - \$75,000 (2 years)
- 2013 – 4H Program Appropriation - \$75,000 (2 years)
- 2013 – Coffee Berry Borer Program - \$600,000
- 2013 – Pacific International Space Center for Exploration Systems - \$1,200,000
- 2013 – Agricultural Livestock Feed Subsidies - \$1,500,000
- 2013 – Hilo Medical Center Primary Care Physicians Training Program - \$1,800,000
- 2014 – Constitutional Amendment for Agricultural Enterprise Revenue Bonds
- 2014 – Mediation for Leased Farm, Ranch, or Commercial Land Disputes
- 2014 – Recordation of Arbitrated Leased Farm, Ranch or Commercial Land Settlements
- 2014 – Hamakua Ditch's Agricultural Water Rate Reduced to \$20/1,000 Gallons
- 2014 – Milk Control Act's Minimum Reserves set at \$300,000
- 2014 – Imiloa Astronomy Center RISE 21st Century Program - \$200,000
- 2014 – Macadamia Nut Felted Coccid Program - \$360,000
- 2014 – Coffee Berry Borer Program - \$500,000
- 2014 – Pacific International Space Center for Exploration Systems - \$500,000
- 2014 – Hilo Medical Center Primary Care Physicians Training Program - \$2,000,000
- 2015 – UH College of Tropical Agriculture & Human Resources – 4 Extension Agents
- 2015 – Hilo Medical Center Primary Care Physicians Training Program - \$2,000,000 annually
- 2015 – Agriculture Land Acquisition - \$10,000,000
- 2015 – Kohala Ditch Irrigation System - \$1,500,000
- 2015 – Kamuela Vacuum Cooling Plant - \$1,000,000
- 2015 – Molokai Irrigation System - \$1,200,000
- 2015 – Department of Agriculture Facilities Repair & Maintenance - \$1,400,000
- 2016 – Department of Land & Natural Resources Game Management Advisory Commission
- 2016 – Organic Food Production Tax Credit
- 2016 – Department of Agriculture Industrial Hemp Pilot Project
- 2016 – Department of Agriculture Rapid Ohia Death Research - \$300,000
- 2016 – Department of Transportation Albizia Mitigation - \$1,500,000
- 2016 – Livestock Revitalization & Feed Development Grant Program - \$2,000,000

Paid for by Friends for Richard Onishi
2040 Alana Place, Hilo, HI 96720, Eddie Alonzo, Chair

Council Candidates, cont. from pg. 13

formation kiosks developed by Ka'ū Scenic Byway Committee.

Whiting said, "We do have a lot to offer visitors." She said it is important to create infrastructure for visitors and residents alike, citing the lack of restrooms at areas such as South Point.

Ka'ū Senate Seat, cont. from pg. 6

lowing construction of personal housing on conservation land. He said he would work with small farmers to provide low-cost irrigation where needed. H also supports re-

Patti Barry, a member of the Ka'ū Community Development Plan, said all of these ideas are in the CDP and asked about the status of it. David said the CDP is being reviewed by the Planning Department.

"It's there; it just needs to be done," Barry said.

gional brands such as "Ka'ū Coffee."

See more on Fogel's views regarding lawmaking, political processes, elections, education and incarceration at fredfogel.net.

✓ VOTE RICHARD CREAGAN for STATE HOUSE DISTRICT 5

I work to support our health care, our schools, our economy, our unions, and our environment, all part of the good life I want for you.

I am proud to be endorsed by:



To find out more about me and my positions on the issues please visit:

Creagan.org

Paid for by the Friends of Creagan, PO Box 189, Naalehu, HI 96772



PLEASE VOTE FOR YOUR STATE SENATOR on AUG 13!

RUSSELL RUDERMAN

DISTRICT 2 - PUNA & KA'U

Founder & Owner of Island Naturals • Created over 200 jobs on the Big Island
Believes in better, more responsive government! • Has been endorsed by:



Aloha from Russell, Tina and Aina Ruel